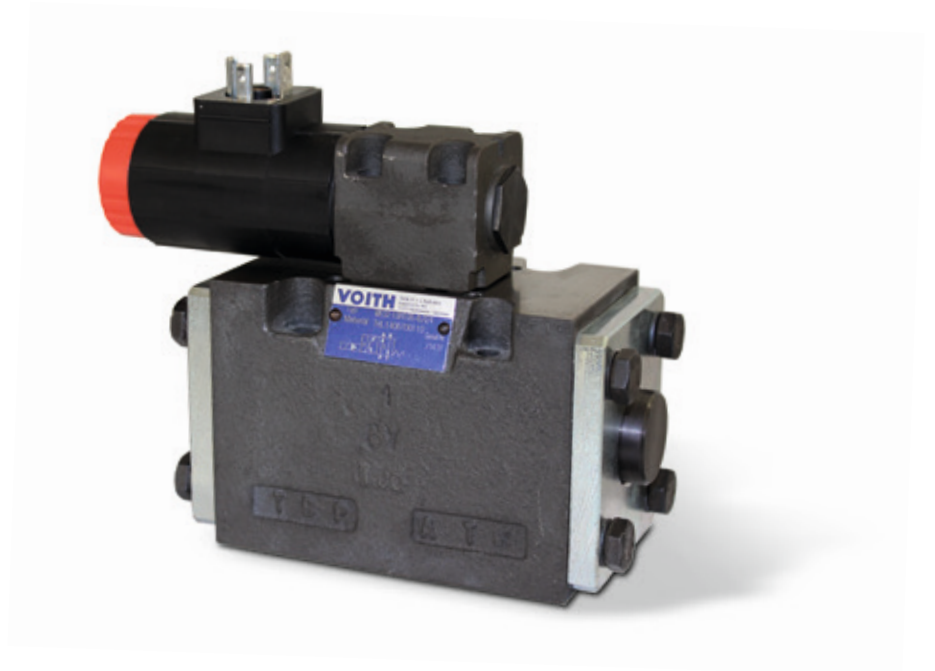


# 4/2, 4/3 Directional control valve, NG10 ISO 4401, piloted

## Technical data sheet



### Advantages

- + High switching power, short switching time
- + Energy saving through minimised flow resistance
- + Easy service
- + Solenoid coil can be turned through 3 x 90°

## Technical data

### General

Type of valve	piston valve
Operation	electric
Mounting	4x M6x75 DIN912
Connection of ports	mounting plate
Ambient temperature	-5 to +50 °C
Mounting position	any
Mass valve	4.0 kg

### Hydraulic

Operation pressure P,A,B	max. 315 bar
Operation pressure T	max. 150 / 315* bar
Control pressure range	3 to 315 bar
Control oil volume	2 x 1,5 cm³ at 4/3 valves 3 cm³ at 4/2 valves
Hydraulic oil temperature	-10 to +70 °C
Viscosity range	10 to 300 mm²/s
max. flow	160 l /min

### Electric

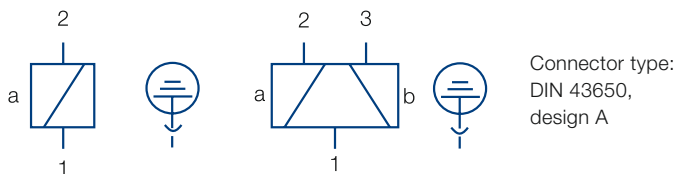
Voltage (±10%)	24 V DC	230 V, 50 Hz AC
Switching time on **	17 ms	
Switching time off ***	17 ms	
Power consumption P20	23 W	
Start up peak P20		50 VA
Duty factor	100%	100%
Protection system DIN 40050	IP65 at inserted valve plug	

\* at external pilot oil drain

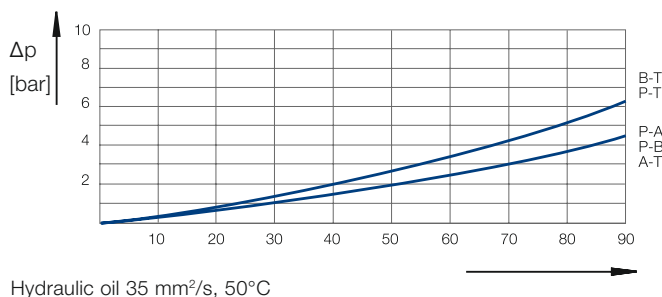
\*\* at 24V DC ± 5%

\*\*\* at terminal voltage = -50V at free circuit

## Electrical connection



## Characteristic curve



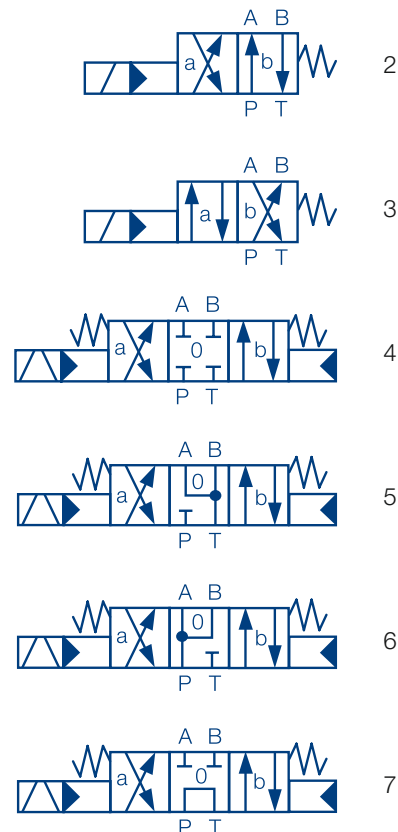
## Advantages

- + Piloted piston valve
- + High switching power, short switching time
- + Energy saving through minimised flow resistance with internal or external pilot oil supply
- + Easy service: solenoid can be changed without leakage while the valve is under system pressure
- + Solenoid coil can be turned through 3 x 90°, allow alternative connector position
- + Only one connector, even with 4/3 way valves

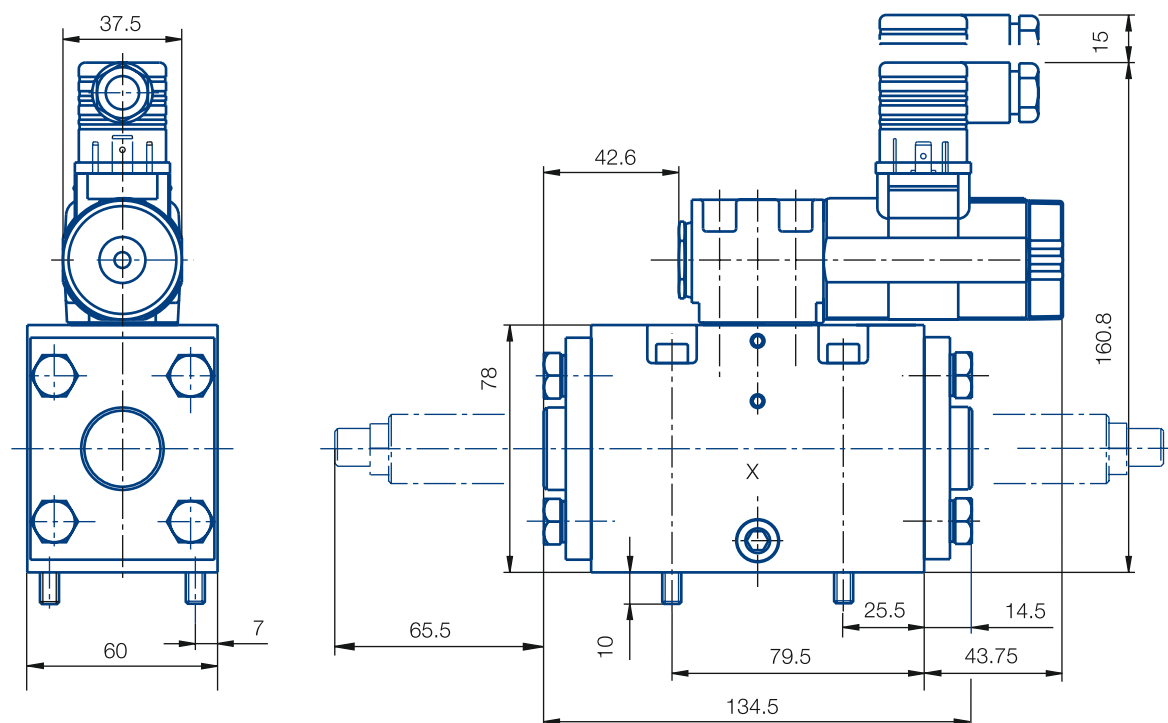
## Options

- Adjustable switching delay
- Stroke limitation (replace one-way restrictor)
- Electric monitoring of the spool position
- Alternative symbols - data sheet: 14607-DSH
- Alternative voltages

## Symbol



## Dimensional drawing

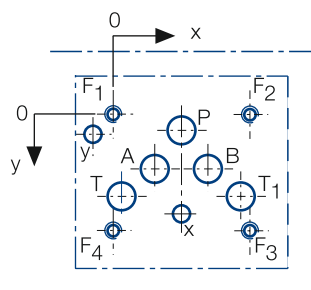


Dimensions in mm

Plug is not included

Mounting screws are not included, 4 pcs. M6x75 DIN 912, M=14 Nm

## Port connection pattern NG 4 ISO 4401



View: fastening side of mounting plate

F: M6, boring hole depth min. 1,5 x Ø.

Only at external supply x and y

Various single or multiple mounting plates are available

	P	A	T	B	T1	F1	F2	F3	F4	x	y
Ø max [mm]	11,5	11,5	11,5	11,5	11,5	-	-	-	-	7	7
x [mm]	27	16,5	3,2	37,5	50,8	0	54	54	0	27	-8
y [mm]	6,4	21,5	32,5	21,5	32,5	0	0	46	46	39,6	8

## Type code

**We 05 - 10 H 100 - 4 L X Y T2 B1 Z 220/5 H N**

• **manual emergency operation**

• **electric interface**

H = plug DIN 43650, design A

M = plug M12

• **power supply**

024/0 = 24V DC

220/5 = 230V/50Hz

• **solenoid type**

R= single solenoid

Z= double solenoid

• **stroke limitation**

• **adjustable switching time**

• **pilot oil drain extern**

• **pilot oil supply extern**

• **pilot type, L = horizontal**

• **nominal size pilot**

• **design code**

• **design valve**

• **nominal size valve**

• **symbol**

• **directional control valve, electric operated**

• **material number**

This is a translated document. Original language: german.

Legally binding language version of document: german.

Voith Group  
St. Poeltener Str. 43  
89522 Heidenheim  
Germany

Contact:  
Phone+49 7152 992 3  
sales-rut@voith.com

[www.voith.com/hydraulic-systems](http://www.voith.com/hydraulic-systems)



**VOITH**  
Inspiring Technology  
for Generations