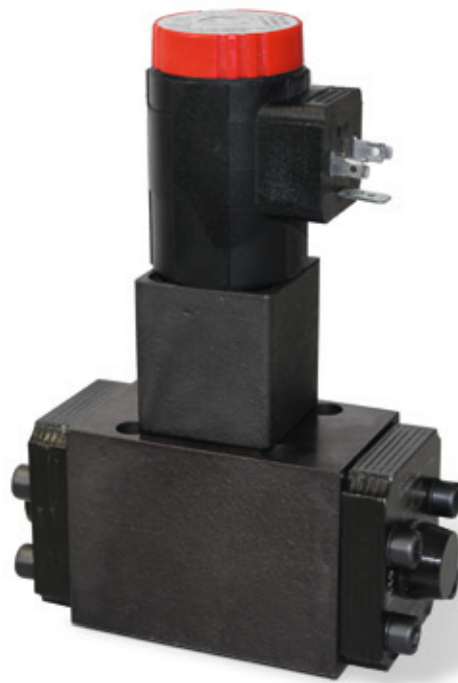


4/2, 4/3 Directional control valve, piloted, NG 6 ISO 4401

Technical data sheet



Advantages

- + High switching power
- + Short switching time
- + With internal or external pilot oil supply
- + Easy service
- + Solenoids can be rotated 3 x 90°
- + Only one connector, even with 4/3 way valves

Technical data

General

Type of valve	piston valve
Operation	electric
Mounting	4x M5x30 DIN912
Connection of ports	mounting plate
Mounting positions	mountable in any position
Ambient temperature	-5 to +50 °C
Mass valve	2.2 kg

Hydraulic

Operation pressure P,A,B	315 bar
Operation pressure T	150 / 250* bar
Hydraulic oil temperature	-10 to +70 °C
Viscosity range	20 to 400 mm²/s
Max. flow	80 l /min

Electric

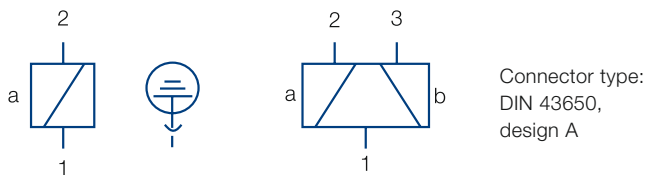
Voltage (±10%)	24 V DC	230V, 50Hz AC
Switching time on*	20 ms	30 ms
Switching time off**	20 ms	30 ms
Power consumption P20	20 W	
Start up peak P20		64 VA
Duty factor	100%	100%
Protection system DIN 40450	IP65	IP65

* at external pilot oil drain

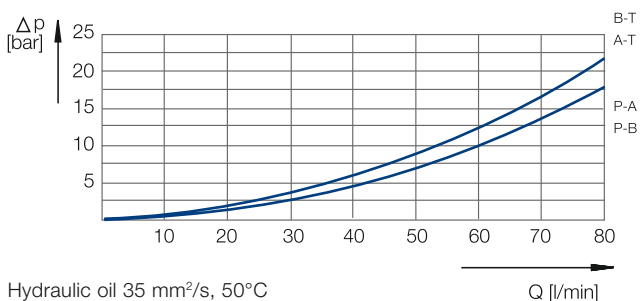
** at 24V DC ±5%

*** at terminal voltage = -50V at free circuit

Electrical connection



Characteristic curve



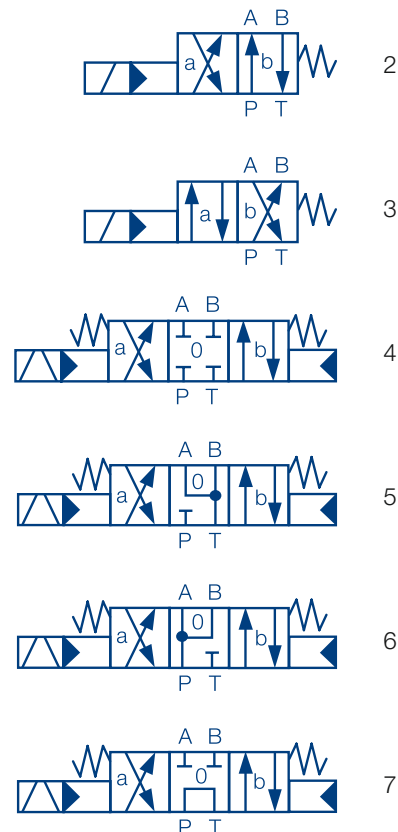
Advantages

- + Piloted piston valve
- + High switching power
- + Short switching time
- + With internal or external pilot oil supply
- + Easy service: solenoid can be changed without leakage while the valve is under system pressure; no tools are required
- + Solenoids can be rotated 3 x 90°, allowing alternative connector positions
- + Only one connector, even with 4/3 way valves

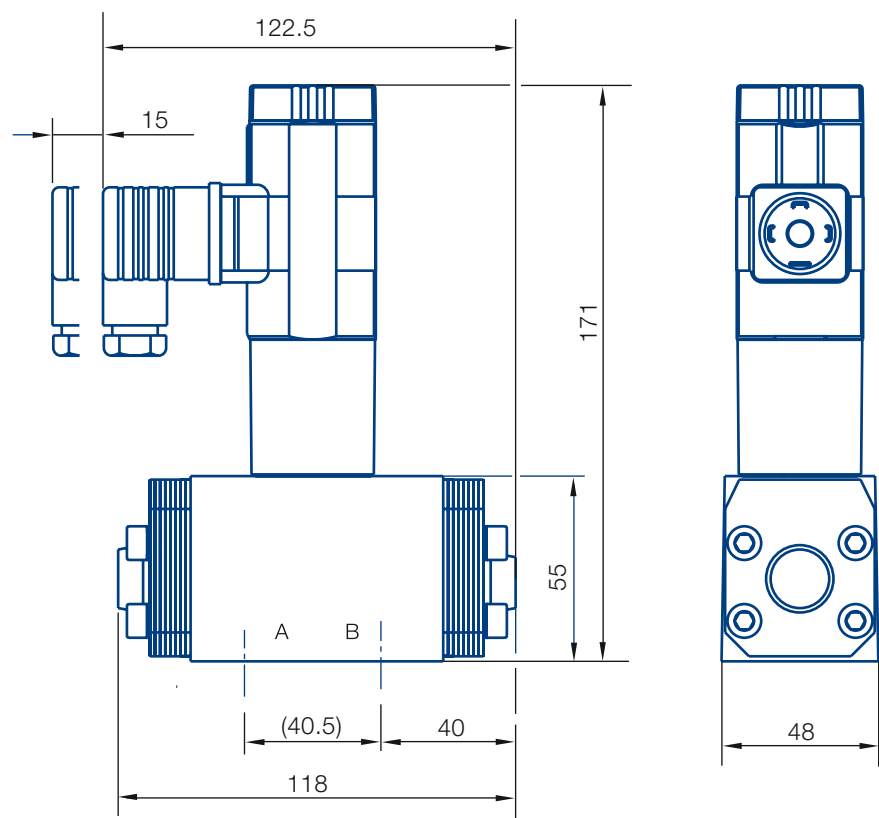
Options

- Adjustable switching delay
- Stroke limitation (replace one-way restrictor)
- Electric monitoring of the spool position
- Alternative symbols - data sheet: 14607-DSH
- Alternative voltages

Symbol



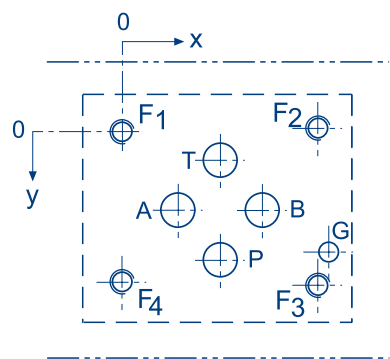
Dimensional drawing



all dimensions in mm

Solenoid can be rotated by 90°
Plug is not included
Screws are not included, 4x M5 x 30 DIN912 - 10.9, MA = 8 Nm

Port connection pattern NG 4 ISO 4401

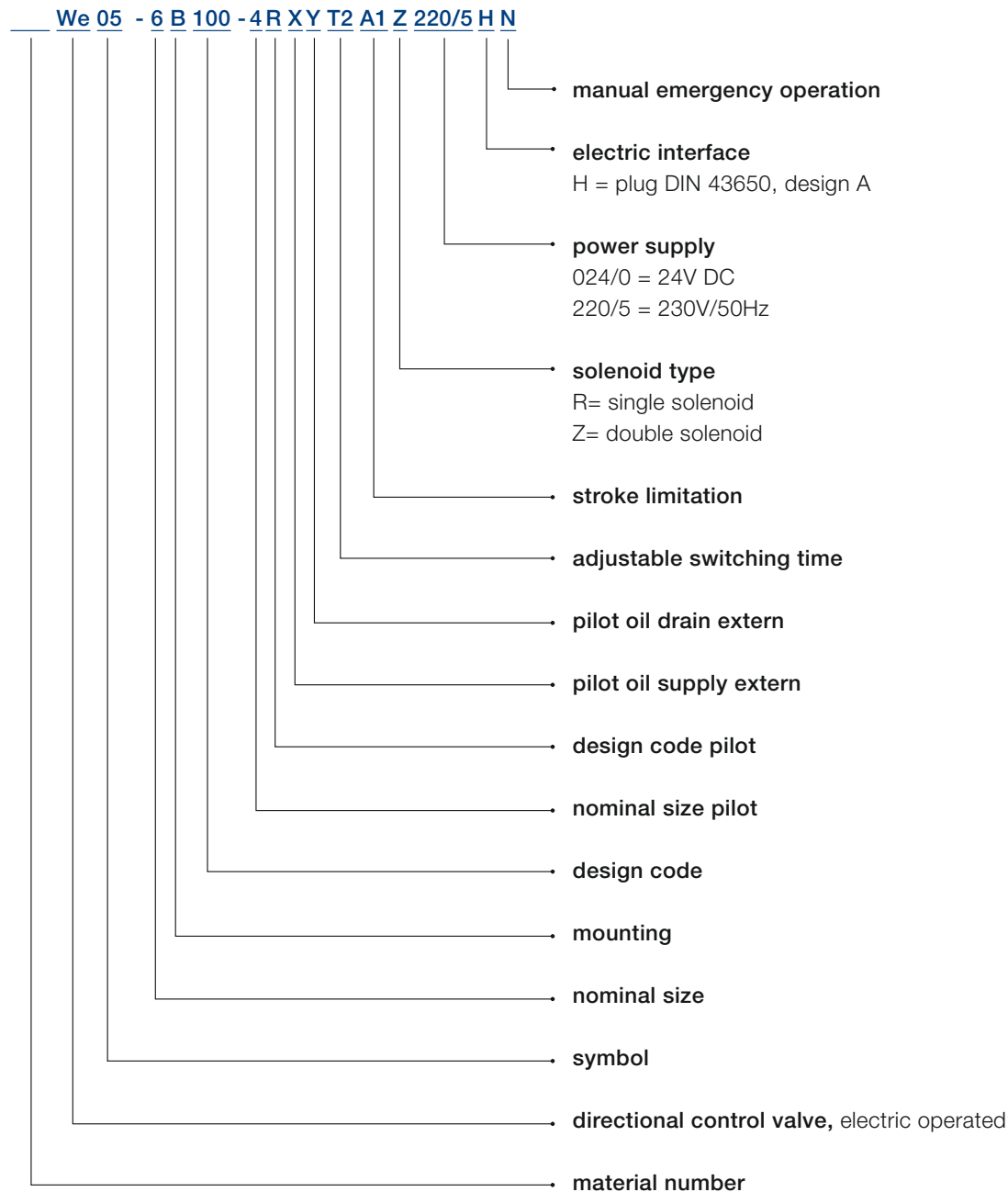


View: fastening side of mounting plate
F: M5, thread depth min. 1,5 x Ø
G: bore hole depth min. 1,5 x Ø

Various single and multiple mounting plates are available.

	P	A	T	B	F1	F2	F3	F4	x	y
Ø max [mm]	Ø 7	Ø 7	Ø 7	Ø 7	-	-	-	-	Ø 4	Ø 4
x [mm]	21.5	12.7	21.5	30.2	0	40.5	40.5	0	46.5	-5
y [mm]	25.75	15.45	5.15	15.45	0	-0.75	31.75	31	25.25	5.95

Type code



This is a translated document. Original language: german.
Legally binding language version of document: german.

Voith Group
St. Poeltener Str. 43
89522 Heidenheim
Germany

www.voith.com/hydraulic-systems

Contact:
Phone+49 7152 992 3
sales-rut@voith.com



VOITH
Inspiring Technology
for Generations