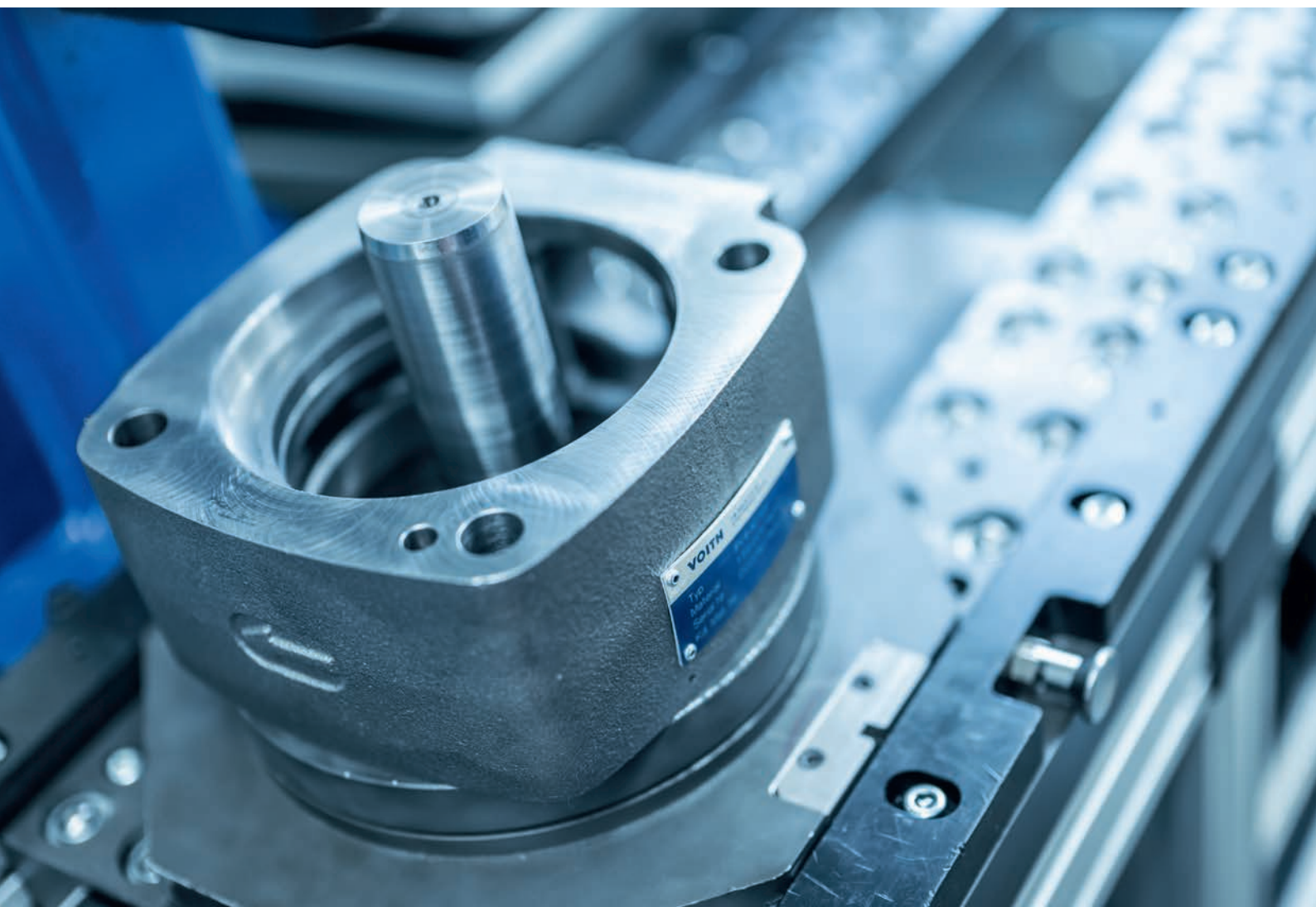


Produktabkündigungsmitteilung Product discontinuance notice



Übersicht der Produktabkündigungen

Overview of the product discontinuations

Wir sind bestrebt, Ihnen die besten Produkte mit einem Höchstmaß an Qualität und Service zu liefern. Dazu gehört auch die rechtzeitige Information über die zukünftige Verfügbarkeit unserer Produktserien.

Zu den abgekündigten Produkten gehören die Serien IPC, IPCA, IPCAP, IPVA, IPVAP und IPVP.

- **Eine Bestellung dieser Serien kann noch bis Ende 2021 erfolgen.**
- **Service und Ersatzteilverfügbarkeit für diese Serien sind bis zum Jahresende 2024 gewährleistet.**

Um ungeplante Stillstände zu vermeiden und die Lebensdauer Ihrer Maschine zu verlängern, können Sie schon heute auf die Serien IPS, IPV, IPVS, IPH umsteigen. Die Leistungsdaten und Betriebseigenschaften der abgekündigten Pumpen werden durch die verbleibenden Serien erreicht. Auf den nachfolgenden Seiten finden Sie Hinweise zu den Abmaßen der Einzelpumpen. Mit diesen können Sie prüfen, ob durch die Umstellung auf eine der verbleibenden Pumpenserien Änderungen an Ihrer Einbausituation erforderlich werden. Änderungen der Abmaße von Mehrstrompumpen erhalten Sie auf individuelle Anfrage.

Auf Wunsch bieten wir Ihnen maßgeschneiderte Retrofit-Lösungen zur Erhaltung Ihrer Maschinenverfügbarkeit.

Kontaktieren Sie uns: sales-rut@voith.com

We are committed to supplying the best products with the highest levels of quality and service. This includes providing timely information on the future availability of our product series.

Products to be discontinued include the IPC, IPCA, IPCAP, IPVA, IPVAP and IPVP series.

- **Orders for these series must be placed before year-end, 2021.**
- **Service and spare part availability for these series is guaranteed up until year-end, 2024.**

In order to avoid unplanned downtimes and to extend your machine life time, you can migrate to the IPS, IPV, IPVS, IPH series already today. Performance data and operating characteristics of the discontinued pumps are achieved by the remaining series. Dimensions of single pumps can be found on the following pages. Please use this data to identify whether changes of your installation situation are required when changing to one of the remaining pump series. Dimension changes of multiple-flow pumps need to be requested individually.

Our sales engineers are happy to assist you with a customized retrofit solution.

Get in touch with us: sales-rut@voith.com

Inhalt

Table of contents

IPC Serie IPC series	4
IPCA Serie IPCA series	8
IPVA Serie IPVA series	11
IPVAP Serie IPVAP series	16
IPVP Serie IPVP series	21
IPCAP Serie IPCAP series	29
SAE Flanschübersicht SAE flange overview	34



Klicken Sie auf die Produktserie, um zur gewünschten Produktabkündigungsmitteilung zu gelangen.

[Click on the product series to get to the desired product discontinuance notice.](#)

IPC Serie

IPC series

IPC Serie wird durch IPV Serie ersetzt.

IPC series to be replaced by IPV series.

Betroffene Pumpen / Affected pumps

Typ Type	Materialnummer Material number	Typ Nachfolger Type successor	Materialnummer Material number
IPC /3-/8	159.00619210	IPV /3-/8	H68.554310
IPC /4-/13 Z	159.00687010	IPV /4-/13	H68.524410
IPC /4-/16	159.00504710	IPV /4-/16	H68.524510
IPC /4-/20	H56.541630	IPV /4-/20	H68.583010
IPC /4-/25	H56.541730	IPV /4-/25	H68.583110
IPC /4-/32	H56.541830	IPV /4-/32	H56.988910
IPC /5-/40	H56.542230	IPV /5-/40	H68.583210
IPC /5-/50	H56.542330	IPV /5-/50	H68.583310
IPC /5-/64	H56.542430	IPV /5-/64	H68.580310
IPC /6-/100	H56.542910	IPV /6-/100	H68.583410
IPC /6-/125	H56.543010	IPV /6-/125	H68.583510
IPC /6-/80	H56.542810	IPV /6-/80	H56.988010
IPC /7-/160	H59.729620	IPV /7-/160	H68.583610
IPC /7-/200	H59.729710	IPV /7-/200	H56.988710
IPC /7-/250	H59.729820	IPV /7-/250	H68.583710
IPC 3/-10/ 101	159.00590610	IPV 3/-10/ 101	H68.539610
IPC 3/-8/ 101	159.00590510	IPV 3/-8/ 101	H68.539510
IPC 3-8 101	159.00656710	IPV 3-8 101	159.00617210
IPC 4/-13/ 171	159.00503910	IPV 4/-13/ 171	H68.523910
IPC 4/-16/ 171	159.00504610	IPV 4/-16/ 171	H68.524010
IPC 4/-20/ 111	H56.708430	IPV 4/-20/ 111	auf Anfrage / on request
IPC 4/-20/ 171	H68.560330	IPV 4/-20/ 171	H68.524110
IPC 4/-20/ 671	159.00622810	IPV 4/-20/ 671	H68.610510
IPC 4/-25/ 171	H68.560230	IPV 4/-25/ 171	H68.524210
IPC 4/-25/ 671	159.00622910	IPV 4/-25/ 671	H68.601010
IPC 4/-32/ 170	H56.864930	IPV 4/-32/ 170	H68.651710
IPC 4/-32/ 171	H68.562530	IPV 4/-32/ 171	H68.524310
IPC 4/-32/ 671	159.00622710	IPV 4/-32/ 671	H68.610410
IPC 4-25 671	159.00632710	IPV 4/-25/ 671	auf Anfrage / on request
IPC 4-32 171	159.00570010	IPV 4-32 171	159.00568810
IPC 5/-40/ 101	H56.541930	IPV 5/-40/ 101	H68.531510
IPC 5/-40/ 101 Z	159.00687610	IPV 5/-40/ 101	H68.531510
IPC 5/-40/ 111	H56.697230	IPV 5/-40/ 111	H68.668910

Typ Type	Materialnummer Material number	Typ Nachfolger Type successor	Materialnummer Material number
IPC 5/-40/ 171	H68.870130	IPV 5/-40/ 171	H68.735710
IPC 5/-40/ 601	H56.687730	IPV 5/-40/ 601	auf Anfrage / on request
IPC 5/-50/ 101	H56.542030	IPV 5/-50/ 101	H56.987210
IPC 5/-64/ 101	H56.542130	IPV 5/-64/ 101	H56.994920
IPC 5/-64/ 111	H56.645730	IPV 5/-64/ 111	H68.606510
IPC 5/-64/ 170	H56.865530	IPV 5/-64/ 170	H68.608410
IPC 5/-64/ 171	159.00538830	IPV 5/-64/ 171	H68.705610
IPC 5-40 101	159.00586030	IPV 5-40 101	159.00553010
IPC 5-50 101	159.00553230	IPV 5-50 101	159.00553310
IPC 5-64 101	159.00573330	IPV 5-64 101	159.00553710
IPC 6/-100/ 101	H56.542610	IPV 6/-100/ 101	H56.995020
IPC 6/-100/ 111	H56.669210	IPV 6/-100/ 111	H68.656810
IPC 6/-100/ 151	H56.869020	IPV 6/-100/ 151	H68.680910
IPC 6/-100/ 601	H56.748010	IPV 6/-100/ 601	H68.582810
IPC 6/-125/ 101	H56.542710	IPV 6/-125/ 101	H56.995120
IPC 6/-125/ 111	H56.717210	IPV 6/-125/ 111	H56.958020
IPC 6/-125/ 151	H56.869120	IPV 6/-125/ 151	auf Anfrage / on request
IPC 6/-125/ 601	H56.742810	IPV 6/-125/ 601	H68.580210
IPC 6/-125/ 670	H56.866411	IPV 6/-125/ 670	auf Anfrage / on request
IPC 6/-80/ 101	H56.542510	IPV 6/-80/ 101	H68.562410
IPC 6/-80/ 111	H56.642510	IPV 6/-80/ 111	H68.580410
IPC 6/-80/ 601	H56.735910	IPV 6/-80/ 601	H68.582710
IPC 6-125 101	159.00579110	IPV 6-125 101	159.00579410
IPC 6-80 101	159.00577810	IPV 6-80 101	159.00578010
IPC 7/-160/ 111	H58.932920	IPV 7/-160/ 111	H56.902720
IPC 7/-160/ 611	H56.534120	IPV 7/-160/ 611	H68.582910
IPC 7/-200/ 110	159.00258210	IPV 7/-200/ 110	auf Anfrage / on request
IPC 7/-200/ 111	H58.933010	IPV 7/-200/ 111	H56.988510
IPC 7/-200/ 151	H56.868220	IPV 7/-200/ 151	H68.528210
IPC 7/-200/ 611	H56.556510	IPV 7/-200/ 611	H68.599610
IPC 7/-250/ 110	159.00258110	IPV 7/-250/ 110	auf Anfrage / on request
IPC 7/-250/ 111	H58.933120	IPV 7/-250/ 111	H56.958220
IPC 7/-250/ 151	H56.868320	IPV 7/-250/ 151	H68.528720
IPC 7/-250/ 611	H56.562920	IPV 7/-250/ 611	H68.599710
IPC 7/-250/ 613	H56.609120	IPV 7/-250/ 613	H68.687110

Geometriedaten IPC/Geometric parameters IPC

Typ Type	Saugflansch Suction flange [SAE flange no.]	Druckflansch Pressure flange [SAE flange no.]	Ø-Welle Ø-Drive shaft [mm]	Wellenüberstand Driveshaft shoulder [mm]	Höhe Height [mm]	Breite Width [mm]	Länge Length [mm]
IPC 3-3,5	10	10	18	35	101,2	95	106
IPC 3-5	10	10	18	35	101,2	95	110
IPC 3-6,3	11	10	18	35	104,2	95	113
IPC 3-8	12	10	18	35	104,2	95	117,5
IPC 3-10	12	10	18	35	105,5	95	122,5
IPC 4-13	12	10	25	48	125,4	125,4	145,5
IPC 4-16	13	11	25	48	125,4	125,4	149,5
IPC 4-20	13	11	25	48	125,4	125,4	155
IPC 4-25	30	11	25	48	132	126	161
IPC 4-32	30	11	25	48	132	126	170
IPC 5-40	30	12	32	60	158	151	181
IPC 5-50	15	12	32	60	160	153	188
IPC 5-64	15	12	32	60	158	153	199
IPC 6-80	15	14	40	80	204	198	205
IPC 6-100	15	14	40	80	204	198	215
IPC 6-125	15	14	40	80	204	198	232
IPC 7-160	16	14	50	75	249,3	246	273
IPC 7-200	16	14	50	75	249,3	246	283
IPC 7-250	17	14	50	75	249,3	246	299

Hinweis:

Geometrische Längenänderung bei Sonder- und Mehrstrom-pumpen auf Anfrage.

Note:

Geometric length changes for special and multi-flow pumps on request.

Geometriedaten IPV/Geometric parameters IPV

Typ Type	Saugflansch Suction flange [SAE flange no.]	Druckflansch Pressure flange [SAE flange no.]	Ø-Welle Ø-Drive shaft [mm]	Wellenüberstand Driveshaft shoulder [mm]	Höhe Height [mm]	Breite Width [mm]	Länge Length [mm]
IPV 3-3,5	10	10	18	35	100,2	95	106
IPV 3-5	10	10	18	35	100,2	95	110
IPV 3-6,3	11	10	18	35	100,2	95	113
IPV 3-8	11	10	18	35	100,2	95	117,5
IPV 3-10	12	10	18	35	100,2	95	122,5
IPV 4-13	12	10	25	48	124,2	124	145,5
IPV 4-16	12	10	25	48	124,2	124	149,5
IPV 4-20	13	11	25	48	124,2	124	155
IPV 4-25	13	11	25	48	124,2	124	161
IPV 4-32	13	11	25	48	124,2	124	170
IPV 5-40	30	12	32	60	158,3	151	181
IPV 5-50	30	12	32	60	158,3	151	188
IPV 5-64	30	12	32	60	158,3	151	199
IPV 6-80	15	14	40	80	204	198	205
IPV 6-100	15	14	40	80	204	198	215
IPV 6-125	15	14	40	80	204	198	232
IPV 7-160	16	14	50	75	249,3	246	273
IPV 7-200	16	14	50	75	249,3	246	273
IPV 7-250	17	14	50	75	249,3	246	293

Hinweis:

Geometrische Längenänderung bei Sonder- und Mehrstrom-pumpen auf Anfrage.

Note:

Geometric length changes for special and multi-flow pumps on request.

IPCA Serie

IPCA series

IPCA Serie wird durch IPV Serie ersetzt.

IPCA series to be replaced by IPV series.

Betroffene Pumpen / Affected pumps

Typ Type	Materialnummer Material number	Typ Nachfolger Type successor	Materialnummer Material number
IPCA /3/-/10/	159.00470610	IPV /3-/10	H68.554410
IPCA /3/-/3,5/	159.00470210	IPV /3-/3,5	H68.554010
IPCA /3/-/5/	159.00470310	IPV /3-/5	H68.554110
IPCA /3/-/6,3/	159.00470410	IPV /3-/6,3	H68.554210
IPCA /3/-/8/	159.00470510	IPV /3-/8	H68.554310
IPCA /3-/10	159.00471110	IPV /3-/10	H68.554410
IPCA /3-/3,5	159.00470710	IPV /3-/3,5	H68.554010
IPCA /3-/5	159.00470810	IPV /3-/5	H68.554110
IPCA /3-/6,3	159.00470910	IPV /3-/6,3	H68.554210
IPCA /3-/8	159.00471010	IPV /3-/8	H68.554310
IPCA /4/-/13/	159.00476410	IPV /4-/13	H68.524410
IPCA /4/-/16/	159.00476510	IPV /4-/16	H68.524510
IPCA /4/-/16/ Sonder / Special	159.00672210	IPV /4-/16 Sonder / Special	neu / new
IPCA /4/-/20/	159.00476610	IPV /4-/20	H68.583010
IPCA /4/-/25/	159.00476710	IPV /4-/25	H68.583110
IPCA /4/-/32/	159.00420610	IPV /4-/32	H56.988910
IPCA /4-/13	159.00476010	IPV /4-/13	H68.524410
IPCA /4-/16	159.00476110	IPV /4-/16	H68.524510
IPCA /4-/16 Sonder / Special	159.00672310	IPV /4-/16 Sonder / Special	neu / new
IPCA /4-/20	159.00476210	IPV /4-/20	H68.583010
IPCA /4-/25	159.00476310	IPV /4-/25	H68.583110
IPCA /4/3-/13/	159.00493510	IPV /4-/13	H68.524410
IPCA /4/3-/16/	159.00493710	IPV /4-/16	H68.524510
IPCA /4/3-/20/	159.00493810	IPV /4-/20	H68.583010
IPCA /4/3-/25/	159.00493910	IPV /4-/25	H68.583110
IPCA /4/3-/32/	159.00494010	IPV /4-/32	H56.988910
IPCA /4-/32	159.00420710	IPV /4-/32	H56.988910
IPCA /5/-/40/	159.00463710	IPV /5-/40	H68.583210
IPCA /5/-/50/	159.00463910	IPV /5-/50	H68.583310
IPCA /5/-/64/	159.00464110	IPV /5-/64	H68.580310
IPCA /5/4-/40/	159.00547910	IPV /5-/40	H68.583210
IPCA /5/4-/50/	159.00548010	IPV /5-/50	H68.583310
IPCA /5/4-/64/	159.00548110	IPV /5-/64	H68.580310
IPCA /5-/40	159.00464510	IPV /5-/40	H68.583210

Typ Type	Materialnummer Material number	Typ Nachfolger Type successor	Materialnummer Material number
IPCA /5-/50	159.00464710	IPV /5-/50	H68.583310
IPCA /5-/64	159.00464910	IPV /5-/64	H68.580310
IPCA 3/3-10/ 101	159.00470110	IPV 3/-10/ 101	H68.539610
IPCA 3/3-3,5/ 101	159.00469710	IPV 3/-3,5/ 101	H68.539210
IPCA 3/3-5/ 101	159.00469810	IPV 3/-5/ 101	H68.539310
IPCA 3/3-6,3/ 101	159.00469910	IPV 3/-6,3/ 101	H68.539410
IPCA 3/3-8/ 101	159.00470010	IPV 3/-8/ 101	H68.539510
IPCA 3-10 101	159.00469620	IPV 3-10 101	159.00617510
IPCA 3-3,5 101	159.00469220	IPV 3-3,5 101	159.00616710
IPCA 3-5 101	159.00469320	IPV 3-5 101	159.00616910
IPCA 3-6,3 101	159.00469420	IPV 3-6,3 101	159.00617010
IPCA 3-8 101	159.00469520	IPV 3-8 101	159.00617210
IPCA 4/3-13/ 171	159.00477310	IPV 4/-13/ 171	H68.523910
IPCA 4/3-16/ 171	159.00477910	IPV 4/-16/ 171	H68.524010
IPCA 4/3-20/ 171	159.00478010	IPV 4/-20/ 171	H68.524110
IPCA 4/3-25/ 171	159.00478110	IPV 4/-25/ 171	H68.524210
IPCA 4/3-32/ 171	159.00478210	IPV 4/-32/ 171	H68.524310
IPCA 4/4-13/ 171	159.00476810	IPV 4/-13/ 171	H68.523910
IPCA 4/4-16/ 171	159.00476910	IPV 4/-16/ 171	H68.524010
IPCA 4/4-20/ 171	159.00477010	IPV 4/-20/ 171	H68.524110
IPCA 4/4-25/ 171	159.00477110	IPV 4/-25/ 171	H68.524210
IPCA 4/4-32/ 171	159.00477210	IPV 4/-32/ 171	H68.524310
IPCA 4-13 171	159.00421130	IPV 4-13 171	159.00568410
IPCA 4-16 171	159.00421230	IPV 4-16 171	159.00568510
IPCA 4-20 171	159.00421330	IPV 4-20 171	159.00597710
IPCA 4-25 171	159.00421431	IPV 4-25 171	159.00568610
IPCA 4-32 171	159.00421530	IPV 4-32 171	159.00568810
IPCA 4-32 171 Z	159.00607810	IPV 4-32 171	159.00568810
IPCA 5/3-40/ 101	159.00467811	IPV 5/-40/ 101	H68.531510
IPCA 5/3-50/ 101	159.00467910	IPV 5/-50/ 101	H56.987210
IPCA 5/3-64/ 101	159.00468010	IPV 5/-64/ 101	H56.994920
IPCA 5/4-40/ 101	159.00466310	IPV 5/-40/ 101	H68.531510
IPCA 5/4-50/ 101	159.00466510	IPV 5/-50/ 101	H56.987210
IPCA 5/4-64/ 101	159.00466710	IPV 5/-64/ 101	H56.994920
IPCA 5/4-64/ 101 Z	159.00681410	IPV 5/-64/ 101	H56.994920
IPCA 5/5-40/ 101	159.00462910	IPV 5/-40/ 101	H68.531510
IPCA 5/5-50/ 101	159.00463110	IPV 5/-50/ 101	H56.987210
IPCA 5/5-64/ 101	159.00463310	IPV 5/-64/ 101	H56.994920
IPCA 5-40 101	159.00462220	IPV 5-40 101	159.00553010
IPCA 5-50 101	159.00462520	IPV 5-50 101	159.00553310
IPCA 5-50 101 Z	159.00535320	IPV 5-50 101	159.00553310
IPCA 5-64 101	159.00462020	IPV 5-64 101	159.00553710

Geometriedaten IPCA/Geometric parameters IPCA

Typ Type	Saugflansch Suction flange [SAE flange no.]	Druckflansch Pressure flange [SAE flange no.]	Ø-Welle Ø-Drive shaft [mm]	Wellenüberstand Driveshaft shoulder [mm]	Höhe Height [mm]	Breite Width [mm]	Länge Length [mm]
IPCA 3-3,5	10	10	18	35	100,2	94	95
IPCA 3-5	10	10	18	35	100,2	94	99
IPCA 3-6,3	11	10	18	35	103,2	94	102
IPCA 3-8	12	10	18	35	103,2	94	106,5
IPCA 3-10	12	10	18	35	104,5	94	111,5
IPCA 4-13	12	10	25	48	124,2	124	112,1
IPCA 4-16	13	11	25	48	124,2	124	116,1
IPCA 4-20	13	11	25	48	124,2	124	121,6
IPCA 4-25	30	11	25	48	130,2	124	127,6
IPCA 4-32	30	11	25	48	130,2	124	136,6
IPCA 5-40	30	12	32	60	158,3	153	160
IPCA 5-50	15	12	32	60	158,3	153	167
IPCA 5-64	15	12	32	60	158,3	153	178

Hinweis:

Geometrische Längenänderung bei Sonder- und Mehrstrom-pumpen auf Anfrage.

Einzelne IPCA Pumpenstufen einer Mehrstrompumpe sind nicht gegen IPV Pumpenstufen austauschbar, die gesamte Mehrstrompumpe muss ersetzt werden.

Note:

Geometric length changes for special and multi-flow pumps on request.

IPCA single-stages of multiple-flow pumps cannot be replaced by single IPV pump stages, the entire multiple-flow pump must be replaced.

Geometriedaten IPV/Geometric Parameters IPV

Typ Type	Saugflansch Suction flange [SAE flange no.]	Druckflansch Pressure flange [SAE flange no.]	Ø-Welle Ø-Drive shaft [mm]	Wellenüberstand Driveshaft shoulder [mm]	Höhe Height [mm]	Breite Width [mm]	Länge Length [mm]
IPV 3-3,5	10	10	18	35	100,2	95	106
IPV 3-5	10	10	18	35	100,2	95	110
IPV 3-6,3	11	10	18	35	100,2	95	113
IPV 3-8	11	10	18	35	100,2	95	117,5
IPV 3-10	12	10	18	35	100,2	95	122,5
IPV 4-13	12	10	25	48	124,2	124	145,5
IPV 4-16	12	10	25	48	124,2	124	149,5
IPV 4-20	13	11	25	48	124,2	124	155
IPV 4-25	13	11	25	48	124,2	124	161
IPV 4-32	13	11	25	48	124,2	124	170
IPV 5-40	30	12	32	60	158,3	151	181
IPV 5-50	30	12	32	60	158,3	151	188
IPV 5-64	30	12	32	60	158,3	151	199
IPV 6-80	15	14	40	80	204	198	205
IPV 6-100	15	14	40	80	204	198	215
IPV 6-125	15	14	40	80	204	198	232
IPV 7-160	16	14	50	75	249,3	246	273
IPV 7-200	16	14	50	75	249,3	246	273
IPV 7-250	17	14	50	75	249,3	246	293

Hinweis:

Geometrische Längenänderung bei Sonder- und Mehrstrom-pumpen auf Anfrage.

Note:

Geometric length changes for special and multi-flow pumps on request.

IPVA Serie

IPVA series

IPVA Serie wird durch IPV Serie ersetzt.

IPVA series to be replaced by IPV series.

Betroffene Pumpen / Affected pumps

Typ Type	Materialnummer Material number	Typ Nachfolger Type successor	Materialnummer Material number
IPVA /3-/-10/	159.00340810	IPV /3-/-10	H68.554410
IPVA /3-/-3,5/	159.00340410	IPV /3-/-3,5	H68.554010
IPVA /3-/-5/	159.00340510	IPV /3-/-5	H68.554110
IPVA /3-/-6,3/	159.00340610	IPV /3-/-6,3	H68.554210
IPVA /3-/-8/	159.00340710	IPV /3-/-8	H68.554310
IPVA /3-/-10	159.00341810	IPV /3-/-10	H68.554410
IPVA /3-/-3,5	159.00341410	IPV /3-/-3,5	H68.554010
IPVA /3-/-5	159.00341510	IPV /3-/-5	H68.554110
IPVA /3-/-6,3	159.00341610	IPV /3-/-6,3	H68.554210
IPVA /3-/-6,3 4..	159.00624811	IPV /3-/-6,3 4..	neu / new
IPVA /3-/-8	159.00341710	IPV /3-/-8	H68.554310
IPVA /4-/-13/	159.00328210	IPV /4-/-13	H68.524410
IPVA /4-/-16/	159.00328310	IPV /4-/-16	H68.524510
IPVA /4-/-20/	159.00328410	IPV /4-/-20	H68.583010
IPVA /4-/-25/	159.00328510	IPV /4-/-25	H68.583110
IPVA /4-/-32/	159.00328610	IPV /4-/-32	H56.988910
IPVA /4-/-13	159.00329210	IPV /4-/-13	H68.524410
IPVA /4-/-16	159.00329310	IPV /4-/-16	H68.524510
IPVA /4-/-20	159.00329410	IPV /4-/-20	H68.583010
IPVA /4-/-20 Z	159.00681310	IPV /4-/-20	H68.583010
IPVA /4-/-25	159.00329510	IPV /4-/-25	H68.583110
IPVA /4/3-/-13/	159.00489110	IPV /4-/-13	H68.524410
IPVA /4/3-/-16/	159.00487910	IPV /4-/-16	H68.524510
IPVA /4/3-/-20/	159.00487810	IPV /4-/-20	H68.583010
IPVA /4-/-32	159.00329610	IPV /4-/-32	H56.988910
IPVA /5-/-32/	159.00361110	IPV /5-/-32	H56.961310
IPVA /5-/-40/	159.00361210	IPV /5-/-40	H68.583210
IPVA /5-/-50/	159.00361310	IPV /5-/-50	H68.583310
IPVA /5-/-64/	159.00361510	IPV /5-/-64	H68.580310
IPVA /5-/-32	159.00362810	IPV /5-/-32	H56.961310
IPVA /5/4-/-32/	159.00548510	IPV /5-/-32	H56.961310
IPVA /5/4-/-40/	159.00548610	IPV /5-/-40	H68.583210
IPVA /5/4-/-50/	159.00548710	IPV /5-/-50	H68.583310

Typ Type	Materialnummer Material number	Typ Nachfolger Type successor	Materialnummer Material number
IPVA /5/4-/64/	159.00548810	IPV /5-/64	H68.580310
IPVA /5-/40	159.00362910	IPV /5-/40	H68.583210
IPVA /5-/50	159.00363010	IPV /5-/50	H68.583310
IPVA /5-/64	159.00363110	IPV /5-/64	H68.580310
IPVA /6-/100/	159.00502710	IPV /6-/100	H68.583410
IPVA /6-/125/	159.00502810	IPV /6-/125	H68.583510
IPVA /6-/64/	159.00502510	IPV /6-/64	H56.975410
IPVA /6-/80/	159.00502610	IPV /6-/80	H56.988010
IPVA /6-/100	159.00499910	IPV /6-/100	H68.583410
IPVA /6-/125	159.00500010	IPV /6-/125	H68.583510
IPVA /6/3-/100/	159.00500310	IPV /6-/100	H68.583410
IPVA /6/3-/125/	159.00500410	IPV /6-/125	H68.583510
IPVA /6/3-/64/	159.00500110	IPV /6-/64	H56.975410
IPVA /6/3-/80/	159.00500210	IPV /6-/80	H56.988010
IPVA /6/4-/100/	159.00501910	IPV /6-/100	H68.583410
IPVA /6/4-/125/	159.00502010	IPV /6-/125	H68.583510
IPVA /6/4-/64/	159.00501710	IPV /6-/64	H56.975410
IPVA /6/4-/80/	159.00501810	IPV /6-/80	H56.988010
IPVA /6/5-/100/	159.00502310	IPV /6-/100	H68.583410
IPVA /6/5-/125/	159.00502410	IPV /6-/125	H68.583510
IPVA /6/5-/64/	159.00502110	IPV /6-/64	H56.975410
IPVA /6/5-/80/	159.00502210	IPV /6-/80	H56.988010
IPVA /6-/64	159.00499710	IPV /6-/64	H56.975410
IPVA /6-/80	159.00499810	IPV /6-/80	H56.988010
IPVA 3/3-10/ 101	159.00340310	IPV 3/-10/ 101	H68.539610
IPVA 3/3-3,5/ 101	159.00339910	IPV 3/-3,5/ 101	H68.539210
IPVA 3/3-5/ 101	159.00340010	IPV 3/-5/ 101	H68.539310
IPVA 3/3-6,3/ 101	159.00340110	IPV 3/-6,3/ 101	H68.539410
IPVA 3/3-8/ 101	159.00340210	IPV 3/-8/ 101	H68.539510
IPVA 3-10 101	159.00341320	IPV 3-10 101	159.00617510
IPVA 3-3,5 101	159.00340920	IPV 3-3,5 101	159.00616710
IPVA 3-3,5 401 Z	159.00668610	IPV 3-3,5 401	neu/new
IPVA 3-5 101	159.00341020	IPV 3-5 101	159.00616910
IPVA 3-6,3 101	159.00341120	IPV 3-6,3 101	159.00617010
IPVA 3-8 101	159.00341220	IPV 3-8 101	159.00617210
IPVA 4/3-13/ 171	159.00344010	IPV 4/-13/ 171	H68.523910
IPVA 4/3-16/ 171	159.00344110	IPV 4/-16/ 171	H68.524010
IPVA 4/3-20/ 171	159.00344210	IPV 4/-20/ 171	H68.524110
IPVA 4/3-25/ 171	159.00344310	IPV 4/-25/ 171	H68.524210
IPVA 4/3-32/ 171	159.00344410	IPV 4/-32/ 171	H68.524310
IPVA 4/4-13/ 171	159.00327710	IPV 4/-13/ 171	H68.523910

Typ Type	Materialnummer Material number	Typ Nachfolger Type successor	Materialnummer Material number
IPVA 4/4-16/ 171	159.00327810	IPV 4/-16/ 171	H68.524010
IPVA 4/4-20/ 171	159.00327910	IPV 4/-20/ 171	H68.524110
IPVA 4/4-25/ 171	159.00328010	IPV 4/-25/ 171	H68.524210
IPVA 4/4-32/ 171	159.00328110	IPV 4/-32/ 171	H68.524310
IPVA 4-13 171	159.00328730	IPV 4-13 171	159.00568410
IPVA 4-16 171	159.00328830	IPV 4-16 171	159.00568510
IPVA 4-16 471	159.00663420	IPV 4-16 471	neu/new
IPVA 4-16 471 Z	159.00663410	IPV 4-16 471	neu/new
IPVA 4-20 171	159.00328930	IPV 4-20 171	159.00597710
IPVA 4-20 471	159.00663520	IPV 4-20 471	neu/new
IPVA 4-25 171	159.00329030	IPV 4-25 171	159.00568610
IPVA 4-25 471	159.00676420	IPV 4-25 471	neu/new
IPVA 4-25 471 Z	159.00676510	IPV 4-25 471	neu/new
IPVA 4-32 171	159.00329130	IPV 4-32 171	159.00568810
IPVA 4-32 471	159.00695220	IPV 4-32 471	neu/new
IPVA 5/3-32/ 101	159.00362010	IPV 5/-32/ 101	H56.961110
IPVA 5/3-40/ 101	159.00362110	IPV 5/-40/ 101	H68.531510
IPVA 5/3-50/ 101	159.00362210	IPV 5/-50/ 101	H56.987210
IPVA 5/3-64/ 101	159.00362310	IPV 5/-64/ 101	H56.994920
IPVA 5/4-32/ 101	159.00361610	IPV 5/-32/ 101	H56.961110
IPVA 5/4-40/ 101	159.00361710	IPV 5/-40/ 101	H68.531510
IPVA 5/4-50/ 101	159.00361810	IPV 5/-50/ 101	H56.987210
IPVA 5/4-64/ 101	159.00361910	IPV 5/-64/ 101	H56.994920
IPVA 5/5-32/ 101	159.00360710	IPV 5/-32/ 101	H56.961110
IPVA 5/5-40/ 101	159.00360810	IPV 5/-40/ 101	H68.531510
IPVA 5/5-50/ 101	159.00360910	IPV 5/-50/ 101	H56.987210
IPVA 5/5-64/ 101	159.00361010	IPV 5/-64/ 101	H56.994920
IPVA 5-32 101	159.00362420	IPV 5-32 101	159.00552810
IPVA 5-32 401 Z	159.00685410	IPV 5-32 401	neu/new
IPVA 5-40 101	159.00362520	IPV 5-40 101	159.00553010
IPVA 5-50 101	159.00362620	IPV 5-50 101	159.00553310
IPVA 5-64 101	159.00362720	IPV 5-64 101	159.00553710
IPVA 6/3-100/ 101	159.00500710	IPV 6/-100/ 101	H56.995020
IPVA 6/3-125/ 101	159.00500810	IPV 6/-125/ 101	H56.995120
IPVA 6/3-64/ 101	159.00500510	IPV 6/-64/ 101	H56.975210
IPVA 6/3-80/ 101	159.00500610	IPV 6/-80/ 101	H68.562410
IPVA 6/4-100/ 101	159.00501110	IPV 6/-100/ 101	H56.995020
IPVA 6/4-125/ 101	159.00501210	IPV 6/-125/ 101	H56.995120
IPVA 6/4-64/ 101	159.00500910	IPV 6/-64/ 101	H56.975210
IPVA 6/4-80/ 101	159.00501010	IPV 6/-80/ 101	H68.562410
IPVA 6/5-100/ 101	159.00501510	IPV 6/-100/ 101	H56.995020

Typ Type	Materialnummer Material number	Typ Nachfolger Type successor	Materialnummer Material number
IPVA 6/5-125/ 101	159.00501610	IPV 6/-125/ 101	H56.995120
IPVA 6/5-64/ 101	159.00501310	IPV 6/-64/ 101	H56.975210
IPVA 6/5-80/ 101	159.00501410	IPV 6/-80/ 101	H68.562410
IPVA 6/6-100/ 101	159.00503110	IPV 6/-100/ 101	H56.995020
IPVA 6/6-125/ 101	159.00503210	IPV 6/-125/ 101	H56.995120
IPVA 6/6-64/ 101	159.00502910	IPV 6/-64/ 101	H56.975210
IPVA 6/6-80/ 101	159.00503010	IPV 6/-80/ 101	H68.562410
IPVA 6-100 101	159.00499520	IPV 6-100 101	159.00578510
IPVA 6-125 101	159.00499620	IPV 6-125 101	159.00579410
IPVA 6-64 101	159.00499320	IPV 6-64 101	159.00593010
IPVA 6-80 101	159.00499420	IPV 6-80 101	159.00578010

Geometriedaten IPVA/Geometric Parameters IPVA

Typ Type	Saugflansch Suction flange [SAE flange no.]	Druckflansch Pressure flange [SAE flange no.]	Ø-Welle Ø-Drive shaft [mm]	Wellenüberstand Driveshaft shoulder [mm]	Höhe Height [mm]	Breite Width [mm]	Länge Length [mm]
IPVA 3 – 3.5	10	10	18	35	100,2	95	95
IPVA 3 – 5	10	10	18	35	100,2	95	110
IPVA 3 – 6.3	11	10	18	35	100,2	95	102
IPVA 3 – 8	11	10	18	35	100,2	95	106,5
IPVA 3 – 10	12	10	18	35	100,2	95	111,5
IPVA 4 – 13	12	10	25	48	124,2	124	112,1
IPVA 4 – 16	12	10	25	48	124,2	124	116,1
IPVA 4 – 20	13	11	25	48	124,2	124	121,6
IPVA 4 – 25	13	11	25	48	124,2	124	127,6
IPVA 4 – 32	13	11	25	48	124,2	124	136,6
IPVA 5 – 32	13	11	32	60	158,3	153	154
IPVA 5 – 40	30	12	32	60	158,3	153	160
IPVA 5 – 50	30	12	32	60	158,3	153	167
IPVA 5 – 64	30	12	32	60	158,3	153	178
IPVA 6 – 64	30	12	40	80	204	198	179
IPVA 6 – 80	15	14	40	80	204	198	187
IPVA 6 – 100	15	14	40	80	204	198	197
IPVA 6 – 125	15	14	40	80	204	198	209

Hinweis:

Geometrische Längenänderung bei Sonder- und Mehrstrom-pumpen auf Anfrage.

Einzelne IPVA Pumpenstufen einer Mehrstrompumpe sind nicht gegen IPV Pumpenstufen austauschbar, die gesamte Mehrstrompumpe muss ersetzt werden.

Note:

Geometric length changes for special and multi-flow pumps on request.

IPVA single-stages of multiple-flow pumps cannot be replaced by single IPV pump stages, the entire multiple-flow pump must be replaced.

Geometriedaten IPV/Geometric parameters IPV

Typ Type	Saugflansch Suction flange [SAE flange no.]	Druckflansch Pressure flange [SAE flange no.]	Ø-Welle Ø-Drive shaft [mm]	Wellenüberstand Driveshaft shoulder [mm]	Höhe Height [mm]	Breite Width [mm]	Länge Length [mm]
IPV 3-3,5	10	10	18	35	100,2	95	106
IPV 3-5	10	10	18	35	100,2	95	110
IPV 3-6,3	11	10	18	35	100,2	95	113
IPV 3-8	11	10	18	35	100,2	95	117,5
IPV 3-10	12	10	18	35	100,2	95	122,5
IPV 4-13	12	10	25	48	124,2	124	145,5
IPV 4-16	12	10	25	48	124,2	124	149,5
IPV 4-20	13	11	25	48	124,2	124	155
IPV 4-25	13	11	25	48	124,2	124	161
IPV 4-32	13	11	25	48	124,2	124	170
IPV 5-40	30	12	32	60	158,3	151	181
IPV 5-50	30	12	32	60	158,3	151	188
IPV 5-64	30	12	32	60	158,3	151	199
IPV 6-80	15	14	40	80	204	198	205
IPV 6-100	15	14	40	80	204	198	215
IPV 6-125	15	14	40	80	204	198	232
IPV 7-160	16	14	50	75	249,3	246	273
IPV 7-200	16	14	50	75	249,3	246	273
IPV 7-250	17	14	50	75	249,3	246	293

Hinweis:

Geometrische Längenänderung bei Sonder- und Mehrstrom-pumpen auf Anfrage.

Note:

Geometric length changes for special and multi-flow pumps on request.

IPVAP Serie

IPVAP series

IPVAP Serie wird durch IPS Serie ersetzt.

IPVAP series to be replaced by IPS series.

Betroffene Pumpen / Affected pumps

Typ Type	Materialnummer Material number	Typ Nachfolger Type successor	Materialnummer Material number
IPVAP /3-/10	159.00593810	IPS /3-/10	15900691210
IPVAP /3-/3,5	159.00593410	IPS /3-/3,5	15900690810
IPVAP /3-/5	159.00593510	IPS /3-/5	15900690910
IPVAP /3-/6,3	159.00593610	IPS /3-/6,3	15900691010
IPVAP /3-/8	159.00593710	IPS /3-/8	15900691110
IPVAP /4-/13/	159.00393110	IPS /4-/13	15900672010
IPVAP /4-/16/	159.00393510	IPS /4-/16	15900671710
IPVAP /4-/20/	159.00480510	IPS /4-/20	15900671410
IPVAP /4-/25/	159.00393810	IPS /4-/25	15900671510
IPVAP /4-/32/	159.00394210	IPS /4-/32	15900671310
IPVAP /4-/13	159.00392910	IPS /4-/13	15900672010
IPVAP /4-/13 Z	159.00511510	IPS /4-/13	15900672010
IPVAP /4-/16	159.00393310	IPS /4-/16	15900671710
IPVAP /4-/20	159.00480710	IPS /4-/20	15900671410
IPVAP /4-/20 Z	159.00511710	IPS /4-/20	15900671410
IPVAP /4-/25	159.00394010	IPS /4-/25	15900671510
IPVAP /4-/32	159.00394410	IPS /4-/32	15900671310
IPVAP /5-/32/	159.00429210	IPS /5-/32	15900649210
IPVAP /5-/40/	159.00429610	IPS /5-/40	15900649410
IPVAP /5-/50/	159.00430010	IPS /5-/50	15900649610
IPVAP /5-/64/	159.00430410	IPS /5-/64	15900649710
IPVAP /5-/32	159.00429310	IPS /5-/32	15900649210
IPVAP /5/4-/32/	159.00548910	IPS /5-/32	15900649210
IPVAP /5/4-/40/	159.00540610	IPS /5-/40	15900649410
IPVAP /5/4-/50/	159.00549010	IPS /5-/50	15900649610
IPVAP /5/4-/64/	159.00549110	IPS /5-/64	15900649710
IPVAP /5-/40	159.00429710	IPS /5-/40	15900649410
IPVAP /5-/50	159.00430110	IPS /5-/50	15900649610
IPVAP /5-/64	159.00430510	IPS /5-/64	15900649710
IPVAP /6-/100/	159.00634710	IPS /6-/100	15900666910
IPVAP /6-/125/	159.00634910	IPS /6-/125	15900667010
IPVAP /6-/64/	159.00635010	IPS /6-/64	15900666710
IPVAP /6-/80/	159.00635110	IPS /6-/80	15900666410

Typ Type	Materialnummer Material number	Typ Nachfolger Type successor	Materialnummer Material number
IPVAP /6-/100	159.00634610	IPS /6-/100	15900666910
IPVAP /6-/125	159.00634810	IPS /6-/125	15900667010
IPVAP /6-/64	159.00634410	IPS /6-/64	15900666710
IPVAP /6-/80	159.00634510	IPS /6-/80	15900666410
IPVAP 3/3-3,5/ 101	159.00683510	IPS 3/-3,5/ 101	15900690310
IPVAP 3/3-5/ 101	159.00683710	IPS 3/-5/ 101	15900690410
IPVAP 3-10 101	159.00505720	IPS 3-10 101	15900690210
IPVAP 3-3,5 101	159.00506320	IPS 3-3,5 101	15900689810
IPVAP 3-3,5 101 Z	159.00626610	IPS 3-3,5 101	15900689810
IPVAP 3-5 101	159.00554420	IPS 3-5 101	15900689910
IPVAP 3-6,3 101	159.00493320	IPS 3-6,3 101	15900690010
IPVAP 3-8 101	159.00506020	IPS 3-8 101	15900690110
IPVAP 4/3-13/ 171	159.00394510	IPS 4/-13/ 171	15900672110
IPVAP 4/3-13/ 174	159.00396310	IPS 4/-13/ 174	neu/new
IPVAP 4/3-16/ 171	159.00394610	IPS 4/-16/ 171	15900671910
IPVAP 4/3-20/ 171	159.00394710	IPS 4/-20/ 171	15900671610
IPVAP 4/3-20/ 174	159.00396510	IPS 4/-20/ 174	neu/new
IPVAP 4/3-25/ 171	159.00394810	IPS 4/-25/ 171	15900671810
IPVAP 4/3-25/ 174	159.00396610	IPS 4/-25/ 174	neu/new
IPVAP 4/3-32/ 171	159.00394910	IPS 4/-32/ 171	15900671210
IPVAP 4/3-32/ 174	159.00396710	IPS 4/-32/ 174	neu/new
IPVAP 4/4-13/ 171	159.00393210	IPS 4/-13/ 171	15900672110
IPVAP 4/4-13/ 171 Z	159.00511410	IPS 4/-13/ 171	15900672110
IPVAP 4/4-13/ 174	159.00395510	IPS 4/-13/ 174	neu/new
IPVAP 4/4-13/ 174	159.00395610	IPS 4/-13/ 174	neu/new
IPVAP 4/4-16/ 171	159.00393610	IPS 4/-16/ 171	15900671910
IPVAP 4/4-16/ 174	159.00395810	IPS 4/-16/ 174	neu/new
IPVAP 4/4-20/ 171	159.00480610	IPS 4/-20/ 171	15900671610
IPVAP 4/4-20/ 174	159.00368910	IPS 4/-20/ 174	neu/new
IPVAP 4/4-20/ 174 Z	159.00320510	IPS 4/-20/ 174	neu/new
IPVAP 4/4-25/ 171	159.00393710	IPS 4/-25/ 171	15900671810
IPVAP 4/4-25/ 171 Z	159.00511610	IPS 4/-25/ 171	15900671810
IPVAP 4/4-25/ 174	159.00395910	IPS 4/-25/ 174	neu/new
IPVAP 4/4-32/ 171	159.00394110	IPS 4/-32/ 171	15900671210
IPVAP 4/4-32/ 174	159.00396110	IPS 4/-32/ 174	neu/new
IPVAP 4-13 171	159.00393030	IPS 4-13 171	15900652810
IPVAP 4-16 171	159.00393430	IPS 4-16 171	15900652910
IPVAP 4-16 174	159.00395710	IPS 4-16 174	neu/new
IPVAP 4-20 171	159.00403330	IPS 4-20 171	15900653010
IPVAP 4-20 171 Z	159.00626710	IPS 4-20 171	15900653010
IPVAP 4-25 171	159.00393930	IPS 4-25 171	15900653110

Typ Type	Materialnummer Material number	Typ Nachfolger Type successor	Materialnummer Material number
IPVAP 4-25 174	159.00396010	IPS 4-25 174	neu/new
IPVAP 4-32 171	159.00394330	IPS 4-32 171	15900653210
IPVAP 4-32 174	159.00396210	IPS 4-32 174	neu/new
IPVAP 4-32 471	159.00522930	IPS 4-32 471	15900675810
IPVAP 5/3-32/ 101	159.00431010	IPS 5/-32/ 101	15900649810
IPVAP 5/3-40/ 101	159.00431110	IPS 5/-40/ 101	15900650210
IPVAP 5/3-50/ 101	159.00431210	IPS 5/-50/ 101	15900650410
IPVAP 5/3-64/ 101	159.00431310	IPS 5/-64/ 101	15900650610
IPVAP 5/4-32/ 101	159.00430610	IPS 5/-32/ 101	15900649810
IPVAP 5/4-40/ 101	159.00430710	IPS 5/-40/ 101	15900650210
IPVAP 5/4-50/ 101	159.00430810	IPS 5/-50/ 101	15900650410
IPVAP 5/4-64/ 101	159.00430910	IPS 5/-64/ 101	15900650610
IPVAP 5/5-32/ 101	159.00429010	IPS 5/-32/ 101	15900649810
IPVAP 5/5-32/ 104	159.00433810	IPS 5/-32/ 104	neu/new
IPVAP 5/5-40/ 101	159.00429410	IPS 5/-40/ 101	15900650210
IPVAP 5/5-40/ 104	159.00433910	IPS 5/-40/ 104	neu/new
IPVAP 5/5-50/ 100	159.00544710	IPS 5/-50/ 100	neu/new
IPVAP 5/5-50/ 101	159.00429810	IPS 5/-50/ 101	15900650410
IPVAP 5/5-50/ 104	159.00434010	IPS 5/-50/ 104	neu/new
IPVAP 5/5-64/ 100	159.00544310	IPS 5/-64/ 100	neu/new
IPVAP 5/5-64/ 101	159.00430210	IPS 5/-64/ 101	15900650610
IPVAP 5/5-64/ 104	159.00434110	IPS 5/-64/ 104	neu/new
IPVAP 5-32 101	159.00429120	IPS 5-32 101	15900650910
IPVAP 5-40 101	159.00429520	IPS 5-40 101	15900651210
IPVAP 5-40 104	159.00433901	IPS 5-40 104	neu/new
IPVAP 5-40 401	159.00566110	IPS 5-40 101	15900651210
IPVAP 5-50 101	159.00429920	IPS 5-50 101	15900651510
IPVAP 5-50 401	159.00523420	IPS 5-50 401	neu/new
IPVAP 5-64 101	159.00430320	IPS 5-64 101	15900651710
IPVAP 6/4-80/ 101	159.00694110	IPS 6/-80/ 101	15900666510
IPVAP 6/5-100/ 101	159.00647910	IPS 6/-100/ 101	15900666310
IPVAP 6/6-100/ 100	159.00544811	IPS 6/-100/ 100	neu/new
IPVAP 6/6-100/ 101	159.00634210	IPS 6/-100/ 101	15900666310
IPVAP 6/6-125/ 101	159.00634310	IPS 6/-125/ 101	15900666610
IPVAP 6/6-64/ 101	159.00589511	IPS 6/-64/ 101	15900666810
IPVAP 6/6-80/ 100	159.00544611	IPS 6/-80/ 100	neu/new
IPVAP 6/6-80/ 101	159.00589411	IPS 6/-80/ 101	15900666510
IPVAP 6/6-80/ 401	159.00566311	IPS 6/-80/ 101	15900666510
IPVAP 6-100 101	159.00517921	IPS 6-100 101	15900666210
IPVAP 6-100 401	159.00523621	IPS 6-100 401	neu/new
IPVAP 6-125 101	159.00518021	IPS 6-125 101	15900666010

Typ Type	Materialnummer Material number	Typ Nachfolger Type successor	Materialnummer Material number
IPVAP 6-64 101	159.00517721	IPS 6-64 101	15900667110
IPVAP 6-64 401	159.00631110	IPS 6-64 401	neu/new
IPVAP 6-80 101	159.00517821	IPS 6-80 101	15900666110
IPVAP 6-80 401	159.00638010	IPS 6-80 401	neu/new

Geometriedaten IPVAP / Geometric parameters IPVAP

Typ Type	Saugflansch Suction flange [SAE flange no.]	Druckflansch Pressure flange [SAE flange no.]	Ø-Welle Ø-Drive shaft [mm]	Wellenüberstand Driveshaft shoulder [mm]	Höhe Height [mm]	Breite Width [mm]	Länge Length [mm]
IPVAP 3 – 3.5	10	10	18	35	100,2	94	95
IPVAP 3 – 5	10	10	18	35	100,2	94	99
IPVAP 3 – 6.3	11	10	18	35	100,2	94	102
IPVAP 3 – 8	11	10	18	35	100,2	94	106,5
IPVAP 3 – 10	12	10	18	35	100,2	94	111,5
IPVAP 4 – 13	12	10	25	48	124,2	124	112,1
IPVAP 4 – 16	12	10	25	48	124,2	124	116,1
IPVAP 4 – 20	13	11	25	48	124,2	124	121,6
IPVAP 4 – 25	13	11	25	48	124,2	124	127,6
IPVAP 4 – 32	13	11	25	48	124,2	124	136,6
IPVAP 5 – 32	13	11	32	60	158,3	153	154
IPVAP 5 – 40	30	12	32	60	158,3	153	160
IPVAP 5 – 50	30	12	32	60	158,3	153	167
IPVAP 5 – 64	30	12	32	60	158,3	153	178
IPVAP 6 – 64	30	12	40	80	204,3	198	179
IPVAP 6 – 80	15	14	40	80	204,3	198	187
IPVAP 6 – 100	15	14	40	80	204,3	198	197
IPVAP 6 – 125	15	14	40	80	204,3	198	209

Hinweis:

Geometrische Längenänderung bei Sonder- und Mehrstrom-pumpen auf Anfrage.

Einzelne IPVAP Pumpenstufen einer Mehrstrompumpe sind nicht gegen IPS Pumpenstufen austauschbar, die gesamte Mehrstrompumpe muss ersetzt werden.

Note:

Geometric length changes for special and multi-flow pumps on request.

IPVAP single-stages of multiple-flow pumps cannot be replaced by single IPS pump stages, the entire multiple-flow pump must be replaced.

Geometriedaten IPS/Geometric parameters IPS

Typ Type	Saugflansch Suction flange [SAE flange no.]	Druckflansch Pressure flange [SAE flange no.]	Ø-Welle Ø-Drive shaft [mm]	Wellenüberstand Driveshaft shoulder [mm]	Höhe Height [mm]	Breite Width [mm]	Länge Length [mm]
IPS 3-3,5	10	10	18	35	100	94	95
IPS 3-5	10	10	18	35	100	94	99
IPS 3-6,3	11	10	18	35	100	94	102
IPS 3-8	11	10	18	35	100	94	106,5
IPS 3-10	12	10	18	35	100	94	111,5
IPS 4-13	12	10	25	48	125	125	127,5
IPS 4-16	12	10	25	48	125	125	131,5
IPS 4-20	13	11	25	48	125	125	137
IPS 4-25	13	11	25	48	125	125	143
IPS 4-32	30	52	25	48	132	125	152
IPS 5-32	30	52	32	60	160	158	154
IPS 5-40	30	52	32	60	160	158	160
IPS 5-50	15	52	32	60	160	158	167
IPS 5-64	15	53a	32	60	160	158	178
IPS 6-64	15	53a	40	80	206	198	179
IPS 6-80	15	53a	40	80	206	198	187
IPS 6-100	16	54	40	80	206	198	197
IPS 6-125	16	54	40	80	206	198	209
IPS 7-125	16	54	50	75 (104)	254	246	263
IPS 7-160	17	55	50	75 (104)	254	251	273
IPS 7-200	17/2	55	50	75 (104)	254	251	283
IPS 7-250	17/2	55	50	75 (104)	254	251	293

Hinweis:

Geometrische Längenänderung bei Sonder- und Mehrstrom-pumpen auf Anfrage.

Note:

Geometric length changes for special and multi-flow pumps on request.

IPVP Serie

IPVP series

IPVP Serie wird durch IPS Serie ersetzt.

IPVP series to be replaced by IPS series.

Betroffene Pumpen / Affected pumps

Typ Type	Materialnummer Material number	Typ Nachfolger Type successor	Materialnummer Material number
IPVP /3-/10	159.00299710	IPS /3-/10	15900691210
IPVP /3-/3,5	159.00654610	IPS /3-/3,5	15900690810
IPVP /3-/3,5 Z	159.00671010	IPS /3-/3,5	15900690810
IPVP /3-/5	159.00413810	IPS /3-/5	15900690910
IPVP /3-/6,3	159.00447810	IPS /3-/6,3	15900691010
IPVP /3-/6,3 Z	159.00546810	IPS /3-/6,3	15900691010
IPVP /3-/8	159.00346310	IPS /3-/8	15900691110
IPVP /4-/13	159.00346711	IPS /4-/13	15900672010
IPVP /4-/13 4.. u. 9..	159.00588110	IPS /4-/13	15900672010
IPVP /4-/16	159.00377610	IPS /4-/16	15900671710
IPVP /4-/16 Z	159.00549210	IPS /4-/16	15900671710
IPVP /4-/20	159.00299411	IPS /4-/20	15900671410
IPVP /4-/20 Z	159.00546010	IPS /4-/20	15900671410
IPVP /4-/25	159.00436010	IPS /4-/25	15900671510
IPVP /4-/32	159.00291111	IPS /4-/32	15900671310
IPVP /5-/32	159.00400410	IPS /5-/32	15900649210
IPVP /5-/32 Z	159.00545110	IPS /5-/32	15900649210
IPVP /5-/40	159.00291211	IPS /5-/40	15900649410
IPVP /5-/40 Z	159.00546310	IPS /5-/40	15900649410
IPVP /5-/50	159.00375111	IPS /5-/50	15900649610
IPVP /5-/64	159.00291311	IPS /5-/64	15900649710
IPVP /6-/100	159.00291511	IPS /6-/100	15900666910
IPVP /6-/100 Z	159.00612711	IPS /6-/100	15900666910
IPVP /6-/125	159.00319711	IPS /6-/125	15900667010
IPVP /6-/64	159.00391811	IPS /6-/64	15900666710
IPVP /6-/64 Z	159.00545611	IPS /6-/64	15900666710
IPVP /6-/80	159.00291411	IPS /6-/80	15900666410
IPVP /6-/80 Z	159.00588911	IPS /6-/80	15900666410
IPVP /7-/125	159.00442010	IPS /7-/125	15900675210
IPVP /7-/125 Z	159.00598710	IPS /7-/125	15900675210
IPVP /7-/160	159.00321610	IPS /7-/160	15900675310
IPVP /7-/160 Z	159.00611810	IPS /7-/160	15900675310
IPVP /7-/200	159.00644010	IPS /7-/200	15900675410
IPVP /7-/200 Z	159.00668010	IPS /7-/200	15900675410
IPVP /7-/250	159.00667210	IPS /7-/250	neu / new
IPVP 3-/10/ 101	159.00402610	IPS 3-/10/ 101	15900690710

Typ Type	Materialnummer Material number	Typ Nachfolger Type successor	Materialnummer Material number
IPVP 3/-10/ 401	159.00454010	IPS 3/-10/ 401	neu/new
IPVP 3/-3,5/ 101	159.00338110	IPS 3/-3,5/ 101	15900690310
IPVP 3/-3,5/ 101 Z	159.00670910	IPS 3/-3,5/ 101	15900690310
IPVP 3/-3,5/ 601 Z	159.00672610	IPS 3/-3,5/ 601	neu/new
IPVP 3/-5/ 101	159.00314110	IPS 3/-5/ 101	15900690410
IPVP 3/-5/ 601	159.00632810	IPS 3/-5/ 601	neu/new
IPVP 3/-6,3/ 101	159.00511910	IPS 3/-6,3/ 101	15900690510
IPVP 3/-6,3/ 101 Z	159.00546710	IPS 3/-6,3/ 101	15900690510
IPVP 3/-6,3/ 401	159.00450810	IPS 3/-6,3/ 401	neu/new
IPVP 3/-6,3/ 601	159.00574010	IPS 3/-6,3/ 601	neu/new
IPVP 3/-8/ 101	159.00346210	IPS 3/-8/ 101	15900690610
IPVP 3-10 101	159.00678910	IPS 3-10 101	15900690210
IPVP 3-10 901	159.00696810	IPS 3-10 901	neu/new
IPVP 3-3,5 101	159.00676610	IPS 3-3,5 101	15900689810
IPVP 3-3,5 401	159.00695510	IPS 3-3,5 401	neu/new
IPVP 3-5 101	159.00616810	IPS 3-5 101	15900689910
IPVP 3-5 601	159.00632510	IPS 3-5 601	neu/new
IPVP 3-6,3 401	159.00678610	IPS 3-6,3 401	neu/new
IPVP 3-8 101	159.00617110	IPS 3-8 101	15900690110
IPVP 4/-13/ 111	159.00544410	IPS 4/-13/ 111	neu/new
IPVP 4/-13/ 151	159.00555010	IPS 4/-13/ 151	neu/new
IPVP 4/-13/ 171	159.00289611	IPS 4/-13/ 171	15900672110
IPVP 4/-13/ 471	159.00588010	IPS 4/-13/ 171	15900672110
IPVP 4/-13/ 671	159.00292511	IPS 4/-13/ 671	neu/new
IPVP 4/-16/ 111	159.00533610	IPS 4/-16/ 111	neu/new
IPVP 4/-16/ 111 Z	159.00662010	IPS 4/-16/ 111	neu/new
IPVP 4/-16/ 151	159.00533710	IPS 4/-16/ 151	neu/new
IPVP 4/-16/ 171	159.00289711	IPS 4/-16/ 171	15900671910
IPVP 4/-16/ 171 Z	159.00541410	IPS 4/-16/ 171	15900671910
IPVP 4/-16/ 611 Z	159.00547610	IPS 4/-16/ 611	neu/new
IPVP 4/-16/ 651	159.00534810	IPS 4/-16/ 651	neu/new
IPVP 4/-16/ 651 Z	159.00546910	IPS 4/-16/ 651	neu/new
IPVP 4/-16/ 671	159.00292611	IPS 4/-16/ 671	neu/new
IPVP 4/-20/ 151	159.00594010	IPS 4/-20/ 151	neu/new
IPVP 4/-20/ 151 Z	159.00638510	IPS 4/-20/ 151	neu/new
IPVP 4/-20/ 170	159.00403510	IPS 4/-20/ 170	neu/new
IPVP 4/-20/ 171	159.00289811	IPS 4/-20/ 171	15900671610
IPVP 4/-20/ 171 Z	159.00545910	IPS 4/-20/ 171	15900671610
IPVP 4/-20/ 471 (mit 2 WDR)	159.00460710	IPS 4/-20/ 471 (mit 2 WDR)	neu/new
IPVP 4/-20/ 671	159.00292711	IPS 4/-20/ 671	neu/new
IPVP 4/-25/ 111	159.00554510	IPS 4/-25/ 111	neu/new
IPVP 4/-25/ 151	159.00319511	IPS 4/-25/ 151	neu/new
IPVP 4/-25/ 170	159.00525110	IPS 4/-25/ 170	neu/new
IPVP 4/-25/ 171	159.00289911	IPS 4/-25/ 171	15900671810

Typ Type	Materialnummer Material number	Typ Nachfolger Type successor	Materialnummer Material number
IPVP 4/-25/ 471	159.00583510	IPS 4/-25/ 471	neu/new
IPVP 4/-25/ 611	159.00566610	IPS 4/-25/ 611	neu/new
IPVP 4/-25/ 671	159.00292811	IPS 4/-25/ 671	neu/new
IPVP 4/-32/ 111	159.00642910	IPS 4/-32/ 111	neu/new
IPVP 4/-32/ 170	159.00385210	IPS 4/-32/ 170	neu/new
IPVP 4/-32/ 171	159.00290011	IPS 4/-32/ 171	15900671210
IPVP 4/-32/ 671	159.00292911	IPS 4/-32/ 671	neu/new
IPVP 4-13 171	159.00568910	IPS 4-13 171	15900652810
IPVP 4-13 171 Z	159.00607710	IPS 4-13 171	15900652810
IPVP 4-16 171	159.00569010	IPS 4-16 171	15900652910
IPVP 4-16 171 Z	159.00569110	IPS 4-16 171	15900652910
IPVP 4-16 671	159.00715810	IPS 4-16 671	neu/new
IPVP 4-20 171	159.00569210	IPS 4-20 171	15900653010
IPVP 4-20 171 Z	159.00569410	IPS 4-20 171	15900653010
IPVP 4-20 671	159.00569310	IPS 4-20 671	neu/new
IPVP 4-25 171	159.00569510	IPS 4-25 171	15900653110
IPVP 4-25 671	159.00569610	IPS 4-25 671	neu/new
IPVP 4-32 171	159.00569710	IPS 4-32 171	15900653210
IPVP 4-32 671	159.00596810	IPS 4-32 671	neu/new
IPVP 5/-32/ 101	159.00308611	IPS 5/-32/ 101	15900649810
IPVP 5/-32/ 151	159.00314711	IPS 5/-32/ 151	15900649910
IPVP 5/-32/ 151 Z	159.00545010	IPS 5/-32/ 151	15900649910
IPVP 5/-32/ 171	159.00352811	IPS 5/-32/ 171	15900650110
IPVP 5/-32/ 171 Z	159.00545410	IPS 5/-32/ 171	15900650110
IPVP 5/-32/ 471	159.00486510	IPS 5/-32/ 471	neu/new
IPVP 5/-40/ 100	159.00385310	IPS 5/-40/ 100	neu/new
IPVP 5/-40/ 101	159.00290111	IPS 5/-40/ 101	15900650210
IPVP 5/-40/ 104	159.00382611	IPS 5/-40/ 104	neu/new
IPVP 5/-40/ 151	159.00439910	IPS 5/-40/ 151	15900650310
IPVP 5/-40/ 151 Z	159.00627110	IPS 5/-40/ 151	15900650310
IPVP 5/-40/ 171	159.00351311	IPS 5/-40/ 171	neu/new
IPVP 5/-40/ 171 Z	159.00546510	IPS 5/-40/ 171	neu/new
IPVP 5/-40/ 401	159.00492310	IPS 5/-40/ 101	15900650210
IPVP 5/-40/ 471	159.00446510	IPS 5/-40/ 471	neu/new
IPVP 5/-40/ 471 (mit 2 WDR)	159.00488910	IPS 5/-40/ 471 (mit 2 WDR)	neu/new
IPVP 5/-40/ 601	159.00293011	IPS 5/-40/ 601	neu/new
IPVP 5/-50/ 101	159.00290211	IPS 5/-50/ 101	15900650410
IPVP 5/-50/ 111	159.00646710	IPS 5/-50/ 111	neu/new
IPVP 5/-50/ 151	159.00314811	IPS 5/-50/ 151	15900650510
IPVP 5/-50/ 171	159.00353411	IPS 5/-50/ 171	neu/new
IPVP 5/-50/ 171 Z	159.00546210	IPS 5/-50/ 171	neu/new
IPVP 5/-50/ 401	159.00492510	IPS 5/-50/ 101	15900650410
IPVP 5/-50/ 471	159.00446610	IPS 5/-50/ 471	neu/new
IPVP 5/-50/ 471 (mit 2 WDR)	159.00488810	IPS 5/-50/ 471 (mit 2 WDR)	neu/new

Typ Type	Materialnummer Material number	Typ Nachfolger Type successor	Materialnummer Material number
IPVP 5/-50/ 601	159.00293111	IPS 5/-50/ 601	neu/new
IPVP 5/-64/ 100	159.00385410	IPS 5/-64/ 100	neu/new
IPVP 5/-64/ 101	159.00290311	IPS 5/-64/ 101	15900650610
IPVP 5/-64/ 111	159.00533510	IPS 5/-64/ 111	neu/new
IPVP 5/-64/ 151 Z	159.00611510	IPS 5/-64/ 151	15900717310
IPVP 5/-64/ 171	159.00351811	IPS 5/-64/ 171	neu/new
IPVP 5/-64/ 401 Z	159.00637410	IPS 5/-64/ 401	neu/new
IPVP 5/-64/ 601	159.00293211	IPS 5/-64/ 601	15900650810
IPVP 5/-64/ 651	159.00534610	IPS 5/-64/ 651	neu/new
IPVP 5/-64/ 651 Z	159.00547110	IPS 5/-64/ 651	neu/new
IPVP 5/-64/ 670	159.00402710	IPS 5/-64/ 670	neu/new
IPVP 5/-64/ 671	159.00367311	IPS 5/-64/ 671	neu/new
IPVP 5-32 101	159.00552710	IPS 5-32 101	15900650910
IPVP 5-32 101 Z	159.00589310	IPS 5-32 101	15900650910
IPVP 5-40 101	159.00552910	IPS 5-40 101	15900651210
IPVP 5-40 111	159.00643910	IPS 5-40 111	15900651310
IPVP 5-40 171	159.00583810	IPS 5-40 171	neu/new
IPVP 5-40 401	159.00560010	IPS 5-40 101	15900651210
IPVP 5-40 601	159.00573210	IPS 5-40 601	15900651410
IPVP 5-50 101	159.00553110	IPS 5-50 101	15900651510
IPVP 5-50 171 Z	159.00553410	IPS 5-50 171	neu/new
IPVP 5-50 401	159.00561910	IPS 5-50 101	15900651510
IPVP 5-50 401	159.00670310	IPS 5-50 401	neu/new
IPVP 5-50 601	159.00579810	IPS 5-50 601	15900651610
IPVP 5-50 601 Z	159.00613010	IPS 5-50 601	15900651610
IPVP 5-64 101	159.00553610	IPS 5-64 101	15900651710
IPVP 5-64 601	159.00584910	IPS 5-64 601	15900651810
IPVP 6/-100/ 100	159.00385611	IPS 6/-100/ 100	neu/new
IPVP 6/-100/ 101	159.00290511	IPS 6/-100/ 101	15900666310
IPVP 6/-100/ 101 Z	159.00611711	IPS 6/-100/ 101	15900666310
IPVP 6/-100/ 110	159.00677610	IPS 6/-100/ 110	neu/new
IPVP 6/-100/ 111	159.00457511	IPS 6/-100/ 111	neu/new
IPVP 6/-100/ 151	159.00347711	IPS 6/-100/ 151	15900709310
IPVP 6/-100/ 171	159.00353011	IPS 6/-100/ 171	neu/new
IPVP 6/-100/ 451	159.00405411	IPS 6/-100/ 451	neu/new
IPVP 6/-100/ 601	159.00293411	IPS 6/-100/ 601	neu/new
IPVP 6/-100/ 651	159.00687810	IPS 6/-100/ 651	neu/new
IPVP 6/112-125/... 111	159.00537610	IPS 6/112-125/... 111	neu/new
IPVP 6/-125/ 101	159.00290611	IPS 6/-125/ 101	15900666610
IPVP 6/-125/ 111	159.00537511	IPS 6/-125/ 111	neu/new
IPVP 6/-125/ 151	159.00319611	IPS 6/-125/ 151	neu/new
IPVP 6/-125/ 170	159.00537711	IPS 6/-125/ 170	neu/new
IPVP 6/-125/ 171	159.00352911	IPS 6/-125/ 171	neu/new
IPVP 6/-125/ 401	159.00411611	IPS 6/-125/ 401	neu/new

Typ Type	Materialnummer Material number	Typ Nachfolger Type successor	Materialnummer Material number
IPVP 6/-125/ 411	159.00629410	IPS 6/-125/ 411	neu/new
IPVP 6/-125/ 451	159.00413511	IPS 6/-125/ 451	neu/new
IPVP 6/-125/ 601	159.00293511	IPS 6/-125/ 601	neu/new
IPVP 6/-125/ 611	159.00676810	IPS 6/-125/ 611	neu/new
IPVP 6/-64/ 100	159.00658610	IPS 6/-64/ 100	neu/new
IPVP 6/-64/ 101	159.00311111	IPS 6/-64/ 101	15900666810
IPVP 6/-64/ 101 Z	159.00538611	IPS 6/-64/ 101	15900666810
IPVP 6/-64/ 111	159.00544110	IPS 6/-64/ 111	15900698510
IPVP 6/-64/ 111 Z	159.00545510	IPS 6/-64/ 111	15900698510
IPVP 6/-64/ 151	159.00331811	IPS 6/-64/ 151	15900707310
IPVP 6/-64/ 151 Z	159.00607111	IPS 6/-64/ 151	15900707310
IPVP 6/-64/ 171	159.00353311	IPS 6/-64/ 171	neu/new
IPVP 6/-64/ 171 Z	159.00545811	IPS 6/-64/ 171	neu/new
IPVP 6/-64/ 401 Z	159.00561511	IPS 6/-64/ 101	15900666810
IPVP 6/-64/ 451	159.00411511	IPS 6/-64/ 451	neu/new
IPVP 6/-64/ 471	159.00445813	IPS 6/-64/ 471	neu/new
IPVP 6/-80/ 100	159.00385511	IPS 6/-80/ 100	neu/new
IPVP 6/-80/ 101	159.00290411	IPS 6/-80/ 101	15900666510
IPVP 6/-80/ 101 Z	159.00588811	IPS 6/-80/ 101	15900666510
IPVP 6/-80/ 111	159.00376211	IPS 6/-80/ 111	15900688110
IPVP 6/-80/ 151	159.00315811	IPS 6/-80/ 151	neu/new
IPVP 6/-80/ 171	159.00353111	IPS 6/-80/ 171	neu/new
IPVP 6/-80/ 401 Z	159.00592611	IPS 6/-80/ 401	neu/new
IPVP 6/-80/ 411	159.00517011	IPS 6/-80/ 111	15900688110
IPVP 6/-80/ 451	159.00405311	IPS 6/-80/ 451	neu/new
IPVP 6/-80/ 601	159.00293311	IPS 6/-80/ 601	15900701810
IPVP 6/-80/ 671	159.00404511	IPS 6/-80/ 671	neu/new
IPVP 6-100 101	159.00578211	IPS 6-100 101	15900666210
IPVP 6-100 111	159.00603811	IPS 6-100 111	neu/new
IPVP 6-100 401	159.00583112	IPS 6-100 401	neu/new
IPVP 6-100 601	159.00578111	IPS 6-100 601	neu/new
IPVP 6-125 101	159.00578911	IPS 6-125 101	15900666010
IPVP 6-125 401	159.00605510	IPS 6-125 401	neu/new
IPVP 6-125 601	159.00588711	IPS 6-125 601	neu/new
IPVP 6-64 101	159.00576611	IPS 6-64 101	15900667110
IPVP 6-64 101 Z	159.00576811	IPS 6-64 101	15900667110
IPVP 6-64 401	159.00670410	IPS 6-64 401	neu/new
IPVP 6-80 101	159.00577311	IPS 6-80 101	15900666110
IPVP 6-80 111	159.00691810	IPS 6-80 111	neu/new
IPVP 6-80 401	159.00573911	IPS 6-80 101	15900666110
IPVP 6-80 411	159.00585311	IPS 6-80 111	neu/new
IPVP 6-80 601	159.00577411	IPS 6-80 601	neu/new
IPVP 7/-125/ 110	159.00597110	IPS 7/-125/ 110	neu/new
IPVP 7/-125/ 110 Z	159.00598610	IPS 7/-125/ 110	neu/new

Typ Type	Materialnummer Material number	Typ Nachfolger Type successor	Materialnummer Material number
IPVP 7/-125/ 111	159.00290710	IPS 7/-125/ 111	15900675010
IPVP 7/-125/ 111 Z	159.00613310	IPS 7/-125/ 111	15900675010
IPVP 7/-125/ 151	159.00659310	IPS 7/-125/ 151	15900707610
IPVP 7/-125/ 411	159.00519610	IPS 7/-125/ 111	15900675010
IPVP 7/-125/ 611	159.00293610	IPS 7/-125/ 611	neu/new
IPVP 7/-125/ 651	159.00547510	IPS 7/-125/ 651	neu/new
IPVP 7/-160/ 110	159.00556110	IPS 7/-160/ 110	neu/new
IPVP 7/-160/ 111	159.00290810	IPS 7/-160/ 111	15900674910
IPVP 7/-160/ 151	159.00659410	IPS 7/-160/ 151	neu/new
IPVP 7/-160/ 410	159.00586710	IPS 7/-160/ 410	neu/new
IPVP 7/-160/ 611	159.00293710	IPS 7/-160/ 611	15900692710
IPVP 7/-160/ 651	159.00603010	IPS 7/-160/ 651	neu/new
IPVP 7/-160/ 651 Z	159.00612810	IPS 7/-160/ 651	neu/new
IPVP 7/-200/ 110	159.00406511	IPS 7/-200/ 110	neu/new
IPVP 7/-200/ 111	159.00290911	IPS 7/-200/ 111	15900675610
IPVP 7/-200/ 151	159.00659510	IPS 7/-200/ 151	neu/new
IPVP 7/-200/ 611	159.00293811	IPS 7/-200/ 611	neu/new
IPVP 7/-200/ 651	159.00556210	IPS 7/-200/ 651	neu/new
IPVP 7/-250/ 111	159.00291011	IPS 7/-250/ 111	15900675110
IPVP 7/-250/ 151	159.00603210	IPS 7/-250/ 151	neu/new
IPVP 7/-250/ 611	159.00293911	IPS 7/-250/ 611	neu/new
IPVP 7/-250/ 611 Z	159.00596910	IPS 7/-250/ 611	neu/new
IPVP 7/-250/ 651	159.00585010	IPS 7/-250/ 651	neu/new
IPVP 7/-250/ 651 Z	159.00611910	IPS 7/-250/ 651	neu/new
IPVPW 3/-10/ 401	159.00439610	IPSW 3/-10/ 401	neu/new
IPVPW 6/-80/ 111	159.00565111	IPSW 6/-80/ 111	neu/new
IPVPW 6-80 111	159.00577711	IPSW 6-80 111	neu/new
IPVPX 3-10 101	159.00601011	IPSX 3-10 101	neu/new
IPVPX 3-3,5 101	159.00600611	IPSX 3-3,5 101	neu/new
IPVPX 3-5 101	159.00600711	IPSX 3-5 101	neu/new
IPVPX 3-6,3 101	159.00600811	IPSX 3-6,3 101	neu/new
IPVPX 3-8 101	159.00600911	IPSX 3-8 101	neu/new

Geometriedaten IPVP / Geometric parameters IPVP

Typ Type	Saugflansch Suction flange [SAE flange no.]	Druckflansch Pressure flange [SAE flange no.]	Ø-Welle Ø-Drive shaft [mm]	Wellenüberstand Driveshaft shoulder [mm]	Höhe Height [mm]	Breite Width [mm]	Länge Length [mm]
IPVP 3 – 3.5	10	10	18	35	100,2	94	106
IPVP 3 – 5	10	10	18	35	100,2	94	110
IPVP 3 – 6.3	11	10	18	35	100,2	94	113
IPVP 3 – 8	11	10	18	35	100,2	94	117,5
IPVP 3 – 10	12	10	18	35	100,2	94	122,5
IPVP 4 – 13	12	10	25	48	125,2	125	145,5
IPVP 4 – 16	12	10	25	48	125,2	125	149,5
IPVP 4 – 20	13	11	25	48	125,2	125	155
IPVP 4 – 25	13	11	25	48	125,2	125	161
IPVP 4 – 32	13	11	25	48	125,2	125	170
IPVP 5 – 32	13	11	32	60	160	153	175
IPVP 5 – 40	30	12	32	60	160	153	181
IPVP 5 – 50	30	12	32	60	160	153	188
IPVP 5 – 64	30	12	32	60	160	153	199
IPVP 6 – 64	30	12	40	80	204	198	202
IPVP 6 – 80	15	14	40	80	204	198	207
IPVP 6 – 100	15	14	40	80	204	198	216
IPVP 6 – 125	15	14	40	80	204	198	232
IPVP 7-125	15	14	50	75 (104)	249,3	246	263
IPVP 7-160	16	14	50	75 (104)	249,3	246	273
IPVP 7-200	16	14	50	75 (104)	249,3	246	285
IPVP 7-250	17	14	50	75 (104)	249,3	246	293

Hinweis:

Geometrische Längenänderung bei Sonder- und Mehrstrom-pumpen auf Anfrage.

Note:

Geometric length changes for special and multi-flow pumps on request.

Geometriedaten IPS/Geometric parameters IPS

Typ Type	Saugflansch Suction flange [SAE flange no.]	Druckflansch Pressure flange [SAE flange no.]	Ø-Welle Ø-Drive shaft [mm]	Wellenüberstand Driveshaft shoulder [mm]	Höhe Height [mm]	Breite Width [mm]	Länge Length [mm]
IPS 3-3,5	10	10	18	35	100	94	95
IPS 3-5	10	10	18	35	100	94	99
IPS 3-6,3	11	10	18	35	100	94	102
IPS 3-8	11	10	18	35	100	94	106,5
IPS 3-10	12	10	18	35	100	94	111,5
IPS 4-13	12	10	25	48	125	125	127,5
IPS 4-16	12	10	25	48	125	125	131,5
IPS 4-20	13	11	25	48	125	125	137
IPS 4-25	13	11	25	48	125	125	143
IPS 4-32	30	52	25	48	132	125	152
IPS 5-32	30	52	32	60	160	158	154
IPS 5-40	30	52	32	60	160	158	160
IPS 5-50	15	52	32	60	160	158	167
IPS 5-64	15	53a	32	60	160	158	178
IPS 6-64	15	53a	40	80	206	198	179
IPS 6-80	15	53a	40	80	206	198	187
IPS 6-100	16	54	40	80	206	198	197
IPS 6-125	16	54	40	80	206	198	209
IPS 7-125	16	54	50	75 (104)	254	246	263
IPS 7-160	17	55	50	75 (104)	254	251	273
IPS 7-200	17/2	55	50	75 (104)	254	251	283
IPS 7-250	17/2	55	50	75 (104)	254	251	293

Hinweis:

Geometrische Längenänderung bei Sonder- und Mehrstrom-pumpen auf Anfrage.

Note:

Geometric length changes for special and multi-flow pumps on request.

IPCAP Serie

IPCAP series

IPCAP Serie wird durch IPS Serie ersetzt.

IPCAP series to be replaced by IPS series.

Betroffene Pumpen / Affected pumps

Typ Type	Materialnummer Material number	Typ Nachfolger Type successor	Materialnummer Material number
IPCAP /3/-/10/	159.00533410	IPS /3-/10	159.00691210
IPCAP /3/-/3,5/	159.00533010	IPS /3-/3,5	159.00690810
IPCAP /3/-/5/	159.00533110	IPS /3-/5	159.00690910
IPCAP /3/-/6,3/	159.00533210	IPS /3-/6,3	159.00691010
IPCAP /3/-/8/	159.00533310	IPS /3-/8	159.00691110
IPCAP /3-/10	159.00532910	IPS /3-/10	159.00691210
IPCAP /3-/3,5	159.00532510	IPS /3-/3,5	159.00690810
IPCAP /3-/5	159.00532610	IPS /3-/5	159.00690910
IPCAP /3-/6,3	159.00532710	IPS /3-/6,3	159.00691010
IPCAP /3-/8	159.00532810	IPS /3-/8	159.00691110
IPCAP /4/-/13/	159.00479910	IPS /4-/13	159.00672010
IPCAP /4/-/16/	159.00480110	IPS /4-/16	159.00671710
IPCAP /4/-/20/	159.00480210	IPS /4-/20	159.00671410
IPCAP /4/-/25/	159.00480310	IPS /4-/25	159.00671510
IPCAP /4/-/32/	159.00480410	IPS /4-/32	159.00671310
IPCAP /4-/13	159.00479410	IPS /4-/13	159.00672010
IPCAP /4-/16	159.00479510	IPS /4-/16	159.00671710
IPCAP /4-/20	159.00479610	IPS /4-/20	159.00671410
IPCAP /4-/25	159.00479710	IPS /4-/25	159.00671510
IPCAP /4/3-/13/	159.00494110	IPS /4-/13	159.00672010
IPCAP /4/3-/16/	159.00494210	IPS /4-/16	159.00671710
IPCAP /4/3-/20/	159.00494310	IPS /4-/20	159.00671410
IPCAP /4/3-/25/	159.00494410	IPS /4-/25	159.00671510
IPCAP /4/3-/32/	159.00494510	IPS /4-/32	159.00671310
IPCAP /4-/32	159.00479810	IPS /4-/32	159.00671310
IPCAP /5/-/40/	159.00463810	IPS /5-/40	159.00649410
IPCAP /5/-/50/	159.00464010	IPS /5-/50	159.00649610
IPCAP /5/-/64/	159.00468510	IPS /5-/64	159.00649710
IPCAP /5/4-/40/	159.00548210	IPS /5-/40	159.00649410
IPCAP /5/4-/50/	159.00548310	IPS /5-/50	159.00649610
IPCAP /5/4-/64/	159.00548410	IPS /5-/64	159.00649710
IPCAP /5-/40	159.00464610	IPS /5-/40	159.00649410
IPCAP /5-/50	159.00464810	IPS /5-/50	159.00649610
IPCAP /5-/64	159.00465010	IPS /5-/64	159.00649710
IPCAP 3/3-10/ 101	159.00532410	IPS 3/-10/ 101	159.00690710
IPCAP 3/3-3,5/ 101	159.00532010	IPS 3/-3,5/ 101	159.00690310

Typ Type	Materialnummer Material number	Typ Nachfolger Type successor	Materialnummer Material number
IPCAP 3/3-5/ 101	159.00532110	IPS 3/-5/ 101	159.00690410
IPCAP 3/3-6,3/ 101	159.00532210	IPS 3/-6,3/ 101	159.00690510
IPCAP 3/3-8/ 101	159.00532310	IPS 3/-8/ 101	159.00690610
IPCAP 3-10 101	159.00527810	IPS 3-10 101	159.00690210
IPCAP 3-10 101	159.00527820	IPS 3-10 101	159.00690210
IPCAP 3-3,5 101	159.00527420	IPS 3-3,5 101	159.00689810
IPCAP 3-5 101	159.00527510	IPS 3-5 101	159.00689910
IPCAP 3-5 101	159.00527520	IPS 3-5 101	159.00689910
IPCAP 3-6,3 101	159.00527610	IPS 3-6,3 101	159.00690010
IPCAP 3-6,3 101	159.00527620	IPS 3-6,3 101	159.00690010
IPCAP 3-8 101	159.00527720	IPS 3-8 101	159.00690110
IPCAP 4/3-13/ 171	159.00481910	IPS 4/-13/ 171	159.00672110
IPCAP 4/3-16/ 171	159.00482010	IPS 4/-16/ 171	159.00671910
IPCAP 4/3-20/ 171	159.00482110	IPS 4/-20/ 171	159.00671610
IPCAP 4/3-32/ 171	159.00482310	IPS 4/-32/ 171	159.00671210
IPCAP 4/4-13/ 171	159.00480810	IPS 4/-13/ 171	159.00672110
IPCAP 4/4-16/ 171	159.00480910	IPS 4/-16/ 171	159.00671910
IPCAP 4/4-20/ 171	159.00481110	IPS 4/-20/ 171	159.00671610
IPCAP 4/4-25/ 171	159.00481210	IPS 4/-25/ 171	159.00671810
IPCAP 4/4-32/ 171	159.00481310	IPS 4/-32/ 171	159.00671210
IPCAP 4-13 171	159.00421630	IPS 4-13 171	159.00652810
IPCAP 4-16 171	159.00421730	IPS 4-16 171	159.00652910
IPCAP 4-16 471	159.00581610	IPS 4-16 171	159.00652910
IPCAP 4-20 171	159.00421830	IPS 4-20 171	159.00653010
IPCAP 4-25 171	159.00421930	IPS 4-25 171	159.00653110
IPCAP 4-32 171	159.00422030	IPS 4-32 171	159.00653210
IPCAP 5/3-40/ 101	159.00468210	IPS 5/-40/ 101	159.00650210
IPCAP 5/3-50/ 101	159.00468310	IPS 5/-50/ 101	159.00650410
IPCAP 5/3-64/ 101	159.00468410	IPS 5/-64/ 101	159.00650610
IPCAP 5/4-40/ 101	159.00466410	IPS 5/-40/ 101	159.00650210
IPCAP 5/4-50/ 101	159.00466610	IPS 5/-50/ 101	159.00650410
IPCAP 5/4-64/ 101	159.00466810	IPS 5/-64/ 101	159.00650610
IPCAP 5/5-40/ 101	159.00463010	IPS 5/-40/ 101	159.00650210
IPCAP 5/5-50/ 101	159.00463210	IPS 5/-50/ 101	159.00650410
IPCAP 5/5-64/ 101	159.00463410	IPS 5/-64/ 101	159.00650610
IPCAP 5-40 101	159.00462320	IPS 5-40 101	159.00651210
IPCAP 5-50 101	159.00462620	IPS 5-50 101	159.00651510
IPCAP 5-64 101	159.00462120	IPS 5-64 101	159.00651710

Geometriedaten IPCAP / Geometric parameters IPCAP

Typ Type	Saugflansch Suction flange [SAE flange no.]	Druckflansch Pressure flange [SAE flange no.]	Ø-Welle Ø-Drive shaft [mm]	Wellenüberstand Driveshaft shoulder [mm]	Höhe Height [mm]	Breite Width [mm]	Länge Length [mm]
IPCAP 3 – 3.5	10	10	18	35	100,2	94	126
IPCAP 3 – 5	10	10	18	35	100,2	94	130
IPCAP 3 – 6.3	11	10	18	35	103,2	94	133
IPCAP 3 – 8	12	10	18	35	103,2	94	137,5
IPCAP 3 – 10	12	10	18	35	104,5	94	142,5
IPCAP 4 – 13	12	10	25	48	124,2	124	112,1
IPCAP 4 – 16	13	11	25	48	124,2	124	116,1
IPCAP 4 – 20	13	11	25	48	124,2	124	121,6
IPCAP 4 – 25	30	11	25	48	130,2	124	127,6
IPCAP 4 – 32	30	11	25	48	130,2	124	136,6
IPCAP 5 – 40	30	12	32	60	158,3	153	160
IPCAP 5 – 50	15	12	32	60	158,3	153	167
IPCAP 5 – 64	15	12	32	60	158,3	153	178

Hinweis:

Geometrische Längenänderung bei Sonder- und Mehrstrom-pumpen auf Anfrage.

Einzelne IPCAP Pumpenstufen einer Mehrstrompumpe sind nicht gegen IPS Pumpenstufen austauschbar, die gesamte Mehrstrompumpe muss ersetzt werden.

Note:

Geometric length changes for special and multi-flow pumps on request.

IPCAP single-stages of multiple-flow pumps cannot be replaced by single IPS pump stages, the entire multiple-flow pump must be replaced.

Geometriedaten IPS/Geometric parameters IPS

Typ Type	Saugflansch Suction flange [SAE flange no.]	Druckflansch Pressure flange [SAE flange no.]	Ø-Welle Ø-Drive shaft [mm]	Wellenüberstand Driveshaft shoulder [mm]	Höhe Height [mm]	Breite Width [mm]	Länge Length [mm]
IPS 3-3,5	10	10	18	35	100	94	95
IPS 3-5	10	10	18	35	100	94	99
IPS 3-6,3	11	10	18	35	100	94	102
IPS 3-8	11	10	18	35	100	94	106,5
IPS 3-10	12	10	18	35	100	94	111,5
IPS 4-13	12	10	25	48	125	125	127,5
IPS 4-16	12	10	25	48	125	125	131,5
IPS 4-20	13	11	25	48	125	125	137
IPS 4-25	13	11	25	48	125	125	143
IPS 4-32	30	52	25	48	132	125	152
IPS 5-32	30	52	32	60	160	158	154
IPS 5-40	30	52	32	60	160	158	160
IPS 5-50	15	52	32	60	160	158	167
IPS 5-64	15	53a	32	60	160	158	178
IPS 6-64	15	53a	40	80	206	198	179
IPS 6-80	15	53a	40	80	206	198	187
IPS 6-100	16	54	40	80	206	198	197
IPS 6-125	16	54	40	80	206	198	209
IPS 7-125	16	54	50	75 (104)	254	246	263
IPS 7-160	17	55	50	75 (104)	254	251	273
IPS 7-200	17/2	55	50	75 (104)	254	251	283
IPS 7-250	17/2	55	50	75 (104)	254	251	293

Hinweis:

Geometrische Längenänderung bei Sonder- und Mehrstrom-pumpen auf Anfrage.

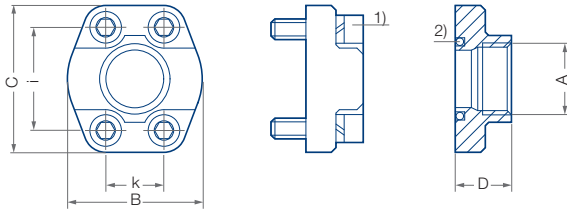
Note:

Geometric length changes for special and multi-flow pumps on request.

SAE Flanschübersicht

SAE flange overview

Saug- und Druckflansch nach SAE.../Suction and pressure flange according to SAE...



Schraubenanzugsmomente nach ISO 6162

- ¹⁾ Zylinderschraube EN ISO 4762
- ²⁾ Runddichtring (O-Ring) ISO-R 1629 NBR
- ³⁾ Sonderausführung, abweichend von SAE J 518 C Code 61

Wrench torque for screws according to ISO 6162

- ¹⁾ Screw EN ISO 4762
- ²⁾ Round seal ring (O-Ring) ISO-R 1629 NBR
- ³⁾ Special design. Deviation from SAE J 518 C Code 61

SAE-Flansch-Nr. SAE flange no.	A Gewinde Thread	B [mm]	C [mm]	D [mm]	E ¹⁾ Dichtring Seal ring	i [mm]	k [mm]	S ²⁾ Gewinde Thread	Max. Druck Max. pressure	
									[bar]	
SAE J 518 C Code 61	10	G ½	46	54	36	18,66 – 3,53	38,1	17,5	M8	345
	11	G ¾	50	65	36	24,99 – 3,53	47,6	22,3	M10	345
	12	G 1	55	70	38	32,92 – 3,53	52,4	26,2	M10	345
	13	G 1-¼	68	79	41	37,69 – 3,53	58,7	30,2	M10	276
	14 ³⁾	G 1-½	82	98	50	47,22 – 3,53	69,9	35,7	M12	345 ³⁾
	30	G 1-½	78	93	45	47,22 – 3,53	69,9	35,7	M12	207
	15	G 2	90	102	45	56,74 – 3,53	77,8	42,9	M12	207
	16	G 2-½	105	114	50	69,44 – 3,53	88,9	50,8	M12	172
	17	G 3	124	134	50	85,32 – 3,53	106,4	61,9	M16	138
	17/2	G 3-½	136	152	48	98,02 – 3,53	120,7	69,9	M16	35
18	G 4	146	162	48	110,72 – 3,53	130,2	77,8	M16	34	
SAE J 518 C Code 62	50	G ½	46	54	36	18,66 – 3,35	40,5	18,2	M8	414
	51	G ¾	55	71	35	24,99 – 3,53	50,8	23,8	M10	414
	52	G 1	65	81	42	32,92 – 3,53	57,2	27,8	M12	414
	53a	G 1-¼	78	95	45	37,69 – 3,53	66,6	31,8	M14	414
	54	G 1-½	94	112	112	47,22 – 3,53	79,3	36,5	M16	414
	55	G 2	114	134	65	56,75 – 3,53	96,8	44,5	M20	400
	56	G 2-½	152	180	80	69,45 – 3,53	123,8	58,8	M24	400

IPC 3250-001611-TED-DEX-00
IPCA 3250-001612-TED-DEX-00
IPVA 3250-001613-TED-DEX-00
IPVAP 3250-001614-TED-DEX-00
IPVP 3250-001615-TED-DEX-00
IPCAP 3250-001616-TED-DEX-00

Voith Group
St. Poeltener Str. 43
89522 Heidenheim, Germany

Contact:
Phone +49 7152 992 3
sales-rut@voith.com
www.voith.com/hydraulics



VOITH