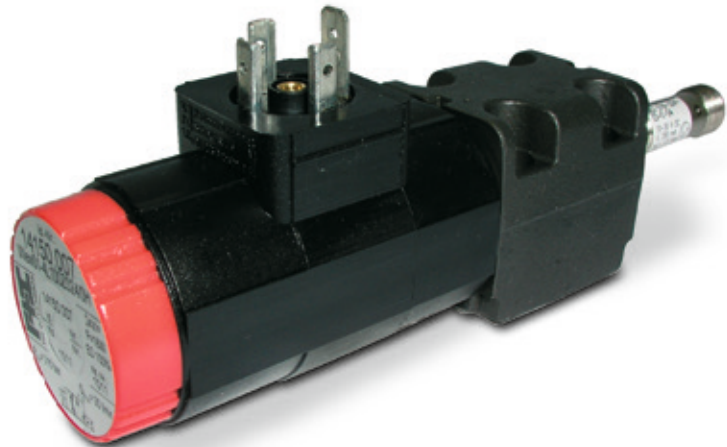


# 4/2, 4/3 Directional control valve, NG 4 ISO 4401, monitored

## Technical data sheet



### Advantages

- + Compact design
- + Short switching time
- + Pressure sealed oil-immersed solenoids
- + Easy service
- + Only one plug, even with 4/3 directional control valves

## Technical data

### General

Type of valve	piston valve
Operation	electric
Mounting	4 x M5 x 40 DIN912
Connection of ports	mounting plate
Mounting positions	mountable in any positions
Ambient temperature	-5 to +50 °C
Mass valve	0,68 kg with single acting solenoid 0,77 kg with double acting solenoid

### Hydraulic

Operation pressure P,A,B	max. 315 bar
Operation pressure T	pressure-free drained (max. 0.5 bar)
Hydraulic oil temperature	-10 to +70 °C
Viscosity range	10 to 300 mm²/s
Max. flow	30 l /min

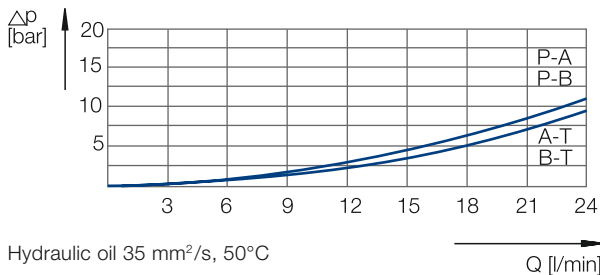
### Electric

Voltage (±10%)	24 V DC	230V, 50Hz AC
Switching time on*	17 ms	25 ms
Switching time off**	17 ms	25 ms
Power consumption P20	20 W	
Start up peak P20		64 VA
Duty factor	100%	100%
Protection system DIN 40450	IP65	IP65

\* at 24V DC ± 5 %

\*\* at terminal voltage = -50V at free circuit

## Characteristic curve



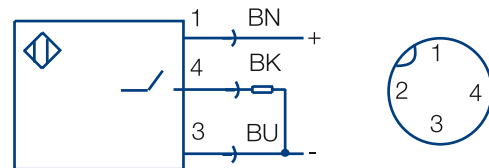
## Advantages

- + Directly controlled piston valve
- + Compact design
- + Short switching time
- + Low internal leakage
- + Pressure sealed oil-immersed solenoids for director alternating current
- + Easy service: solenoid can be changed without leakage while the valve is under system pressure
- + Solenoids can be rotated 3 x 90°, allowing alternative connector positions
- + Only one plug, even with 4/3 directional control valves
- + Port connection pattern according to ISO 4401

## Options

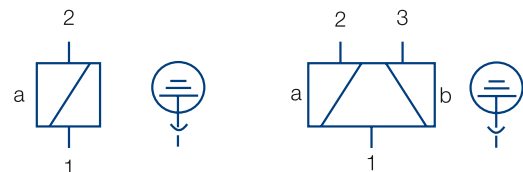
- Alternative voltages
- Alternative symbols - Datasheet: 14607-DSH
- Alternative plugs
- Alternative solenoid position
- Switch position „0“ or „b“ monitoring

## Circuit diagram proximity switch



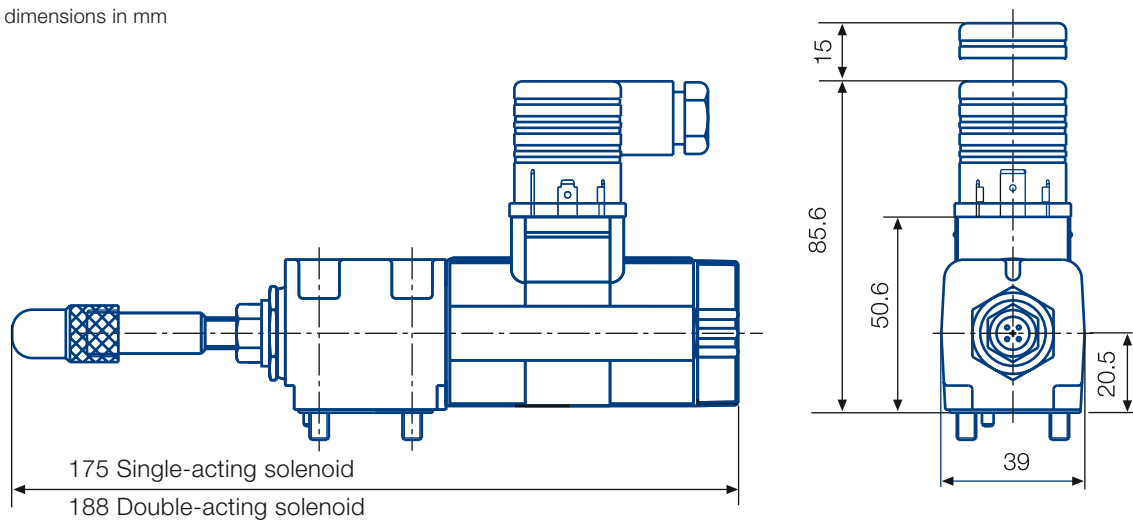
- The position of the valve piston is monitored by proximity switch.
- Proximity switch is mounted on valve body side for monitoring switch position „a“ and on solenoid side for monitoring switching position „b“ (option).
- Connection: plug M12 x 1 (pins) , A-code

## Electrical connection



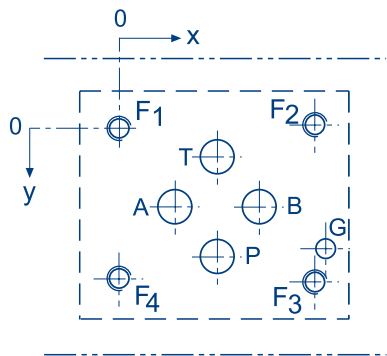
Dimensional drawing

all dimensions in mm



Fastening screws are included.  
Plug is not included.  
The position of the M12 connector is not defined, it depends on the adjustment.

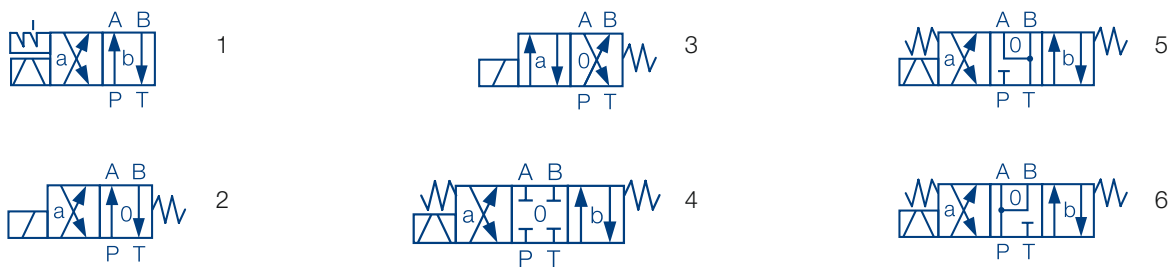
Port connection pattern NG 4 ISO 4401



View: fastening side of mounting plate  
F: M5, thread depth min. 1.5 x Ø  
G: bore hole depth min. 1.5 x Ø  
Various single and multiple mounting plates are available.

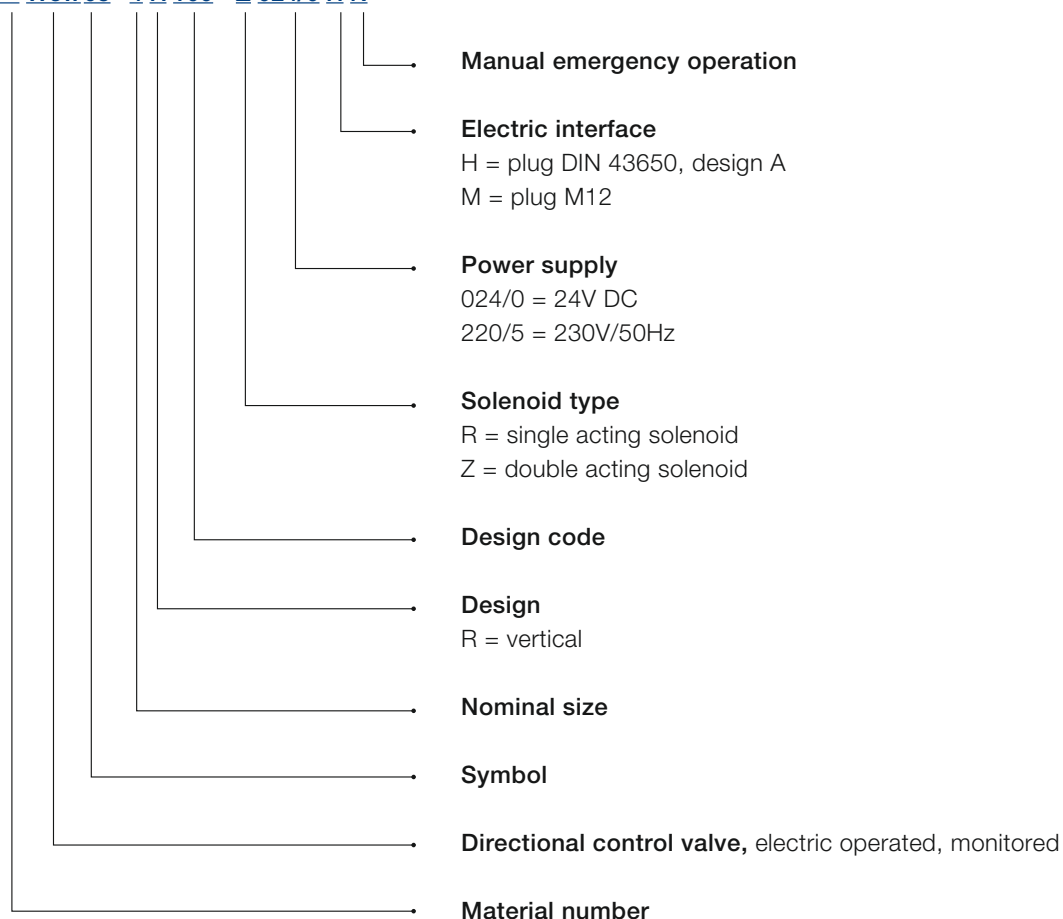
	P	A	T	B	F1	F2	F3	F4	G
Ø max [mm]	4.5	4.5	4.5	4.5	-	-	-	-	3.4
x [mm]	12	4.3	12	19.7	0	24	24	0	26.5
y [mm]	20.25	11.25	2.25	11.25	0	-0.75	23.25	22.5	17.75

Symbol



## Type code

Wew05- 4 R 100 - Z 024/0 H N



This is a translated document. Original language: german.  
Legally binding language version of document: german.

Voith Group  
St. Poeltener Str. 43  
89522 Heidenheim  
Germany

[www.voith.com/hydraulic-systems](http://www.voith.com/hydraulic-systems)

Contact:  
Phone+49 7152 992 3  
[sales-rut@voith.com](mailto:sales-rut@voith.com)



**VOITH**  
Inspiring Technology  
for Generations